

SCHOOL DISTRICT OF COLBY EDUCATION CENTER

DR. STEVEN KOLDEN, SUPERINTENDENT

FINANCIAL AFFAIRS COMMITTEE MEETING

**MONDAY, AUGUST 17, 2015
6:30 PM
COLBY DISTRICT EDUCATION CENTER**

OPEN MEETING

AGENDA

- 1) Review Invoices & Receipts

Committee Members Include: Seth Pinter, Chair
Deb Koncel
Jennifer Lopez

SCHOOL DISTRICT OF COLBY EDUCATION CENTER

Dr. Steven Kolden, Superintendent

REGULAR SCHOOL BOARD MEETING

Monday, August 17, 2015 – 7:00 PM

Colby District Education Center

MEETING NORMS

- *The Board President will actively monitor our interactions.*
- *We will actively listen and not interrupt others.*

AGENDA:

1. CALL TO ORDER / ROLL CALL
2. PLEDGE OF ALLEGIANCE
3. NOTICE OF POSTING
4. PUBLIC PARTICIPATION
5. INFORMATION ITEMS:
 - 5.01 Correspondence (If Any)
 - 5.02 Superintendent's Report – Steve Kolden [Retiree Health Insurance; Wisconsin School News; Chromebooks/Cases/Cart; Little Stars Transition; Annual Meeting September 21-5:30 PM @ CDEC; PLC – June 2016]
 - 5.03 Strategic Planning Progress Monitoring – Technology Report
6. CONSENT AGENDA
 - 6.01 Minutes from the July 20, 2015 Regular Board Meeting
 - 6.02 Requests for Out-of-State Travel
 - 6.02-1 Colby High School Madrigal Troupe to Renaissance Festival in Shakopee, MN on August 29, 2015
 - 6.02-2 Show Choir to Southmont Show Choir Invitational in Crawfordsville, Indiana on November 14, 2015
 - 6.02-3 Show Choir to West Liberty Stars on Stage in West Liberty, Iowa on February 6, 2016
 - 6.02-4 Show Choir to Naperville North Clash of the Sequins Festival in Naperville, Illinois on February 13, 2016
 - 6.02-5 Show Choir to Herscher Sing & Swing Invitational in Herscher, Illinois on March 19, 2016
 - 6.03 Approve Board Member Attendance and Expenses for Travel Outside the District at Meetings Other Than Regular, Special or Committee Meetings (If Any)
 - 6.04 Staff Resignations/Retirements/Leave Requests (If Any)
 - 6.05 Personnel – Transfers / New Hires
 - 6.05-1 Hire of Meghan Walters, High School Tech. Ed. Teacher
 - 6.05-2 Hire of Mary Kallberg, High School Cook (2 days week)
 - 6.05-3 Transfer of Barb Kilty, High School Cook
 - 6.05-4 Hire of Greg Mehlberg, District Technology Coordinator
 - 6.05-5 Hire of Megan Arias, Middle School Secretary (.5 FTE)
 - 6.05-6 Hire of Kathryn Green, High School Secretary (.5 FTE)
 - 6.05-7 Hire of Nicole Hoppmann, ELL Coordinator
 - 6.05-8 Hire of District SIS Secretary (.5 FTE)
 - 6.05-9 Hire of Little Stars Secretary

505 WEST SPENCE ST. • P.O. BOX 139 • COLBY, WI 54421-0139
PHONE 715.223.2301 • FAX 715.223.4539
SKOLDEN@COLBY.K12.WI.US

- 6.05-10 Hire of Maintenance Custodian
- 6.05-11 Hire of Custodian (.5 FTE)
- 6.05-12 Hire of Special Education Aide (8hrs/Week)
- 7. REGULAR BUSINESS – CONSIDERATION OF:
 - 7.01 Agenda Items Moved From Consent Agenda
 - 7.02 Recommendation of Finance Committee
- 8. DISCUSSION INFORMATION
 - 8.01 CESA #10 Review of Individualizes Plan of Support (IPOS) Survey
 - 8.02 Consideration of Reports of Board Members’ Attendance at Seminars and Workshops
 - 8.03 Wisconsin Act 55 - Curriculum
- 9. ACTION INFORMATION
 - 9.01 Approve Milk Bid for 2015-16
 - 9.02 Approve Resolution on VOYA Retirement Account
 - 9.03 Approve 2015-16 Draft Budget for Annual Meeting
 - 9.04 Select and Approve a Provider Under Wisconsin Statute 66.0133, and To Enter Into a Primary Project Development Contract for Initial Budgeting and Scoping of a Final Construction Contract
 - 9.05 Second Reading – Policy #166 – Board Member use of Electronic Mail
 - 9.06 Second Reading – Policy #180 – Operating Procedures
 - 9.07 Second Reading – Policy #345.11 – Selection of High School State Sponsored (HEAB) Scholarship and Honor Students
 - 9.08 Second Reading – Policy #522.2 – Employee Tobacco Use on School Premises
 - 9.09 Second Reading – Policy #671.2 – Mileage Reimbursement
 - 9.10 Second Reading – Policy #831 – Tobacco Use on School Premises
 - 9.11 NEW POLICY – Second Reading – Policy #347.1 – Student Directory Data
- 10. CONVENE TO CLOSED SESSION PER WISCONSIN STATUTES 19.85 (1) FOR THE PURPOSES OF:
 - c) Considering employment, promotion, compensation or performance evaluation data of any public employee over which the governmental body has jurisdiction or exercises responsibility.
 - e) Deliberating or negotiating the purchasing of public properties, the investing of public funds, or conducting other specified public business, whenever competitive or bargaining reasons require a closed session. The Board will consider:
 - 10.01 Agenda Items Moved From Consent Information
 - 10.02 Agenda Items Moved From Action Information
 - 10.03 Update and Sale of Neillsville Property
 - 10.04 Potential Sale of District Property
 - 10.05 Staff Medical Leave
 - 10.06 Reconvene in Open Session
- 11. THE BOARD WILL RECONVENE IN OPEN SESSION IMMEDIATELY UPON COMPLETING THE CLOSED SESSION TO TAKE ACTION, IF NECESSARY, ON SELECTED MATTERS DISCUSSED IN CLOSED SESSION.
- 12. IDENTIFY ITEMS FOR NEXT AGENDA
 - 12.01 Schedule Meetings:
 - 12.01-1 Annual Board of Education Meeting – September 21, 2015 @ 5:30 PM
 - 12.01-2 Financial Affairs Committee Meeting – September 21, 2015 @ 6:30 PM
 - 12.01-3 Regular Board of Education Meeting – September 21, 2015 @ 7:00 PM
 - 12.01-4 Personnel Committee Meeting – ?
 - 12.01-5 Policy and Curriculum Committee Meeting – ?
 - 12.01-6 Facilities and Transportation Committee Meeting – September 15, 2015 ?
 - 12.01-7 Referendum Planning Small Group - ?
- 13. ADJOURNMENT

WISCONSIN School News


August 2015 wasb.org

Official Publication of the Wisconsin Association of School Boards, Inc.



Health, Education and Sustainability

A special issue focused on healthy living, healthy eating



Health, Education and Sustainability

Three Wisconsin schools and one district named Green Ribbon Schools

Shelby Anderson

ABOVE Students take a virtual tour of Lake Mills Elementary School on an interactive screen where users can learn about the green features of the school.

In 2015, Wisconsin schools continued the state's tradition of showcasing the work of exemplary schools through the U.S. Department of Education's Green Ribbon Schools program. Three Wisconsin schools, one school district and one technical college were recognized for reducing their environmental impact and energy costs; improving the health and wellness of schools, students and staff, and providing environmental education opportunities.

Here is a look at some educational opportunities and green initiatives taking place at Wisconsin's 2015 Green Ribbon Schools.

Discovery Charter School COLUMBUS SCHOOL DISTRICT

Housed in Columbus Elementary School, Discovery Charter School was developed in 2007 with the aim of giving young students interested in science and nature opportunities to explore and study the natural world. Principal Sue Sewell is a former elementary teacher who saw science being overlooked in the early grades.

"The school was created to get more science happening at the elementary school level," Sewell said. "As an elementary science

teacher, I felt the passion that a lot of elementary students have for the sciences.”

It is said that children are natural scientists because they are curious about the natural world and how it works, and students at Discovery Elementary School have ample opportunities to be natural scientists. The school has several gardens including a butterfly garden, rain garden, and several vegetable gardens. The school also utilizes a nearby community park and woods physically several times a month and virtually using trail cameras to help study wildlife behavior. The school also has a greenhouse for students to start seedlings in the spring before planting in the school’s gardens.

Students at Discovery Charter School hone their reading and math skills through the various science projects. The school uses an inquiry-based learning method in

which the lessons and projects are driven by student interest.

“We get at the heart of what students want to learn,” Sewell said. “Students find answers to questions they are asking.”

With careful guidance by teachers, students are using and developing math and reading skills as they undertake projects. Sewell said, when students learn this way, math and reading aren’t seen as chores by students, rather they are ways for students to learn more about topics and questions that interest them.

While the school structure may be non-traditional, Sewell is proud of the fact that the students have scored well on state assessments. On the student achievement portion of the school’s 2013-14 School Report Card, which combines a school’s math and reading scores, the school scored 89.8, compared to the K-5 state average of 66.8.

“Some people were concerned that our focus on environmental education would mean test scores

2015 WISCONSIN Green Ribbon Schools

Lake Mills Elementary School
Lake Mills School District

Discovery Charter School
Columbus School District

Colby Elementary School
Colby School District

Middleton-Cross Plains Area
School District

would go down,” Sewell said. “That is not the case.”

One project that stemmed from the school’s inquiry-based learning, involved students and community members and expanded far outside the classroom walls. At the start of the 2012-13 school year, students and staff had to make a decision about what to do with a dying Norway Spruce on school grounds. Students studied the tree and took measurements to determine if it would survive another season or need to be removed immediately. The students made the final decision and watched as the tree was cut down that

BELOW Students from Discovery Charter School in the Columbus School District start plants from seeds in the school’s greenhouse in early spring to get a head start on the growing season.



December. It produced several large logs, which, with the help of a local sawyer, were milled on school property so students could see the process. A local furniture maker then fashioned the boards into a book nook for the school's library.

During the milling process, students discovered worms in several pieces of the wood. They sent a letter along with pictures of the insect to an entomologist at UW-Madison who informed students that the insect played a role in the tree's death. The previous summer's drought likely stressed the tree, allowing the insect to infest and destroy the tree.

After the tree was removed, students led the effort to replace the Norway Spruce with another tree. They conducted research and decided to plant a Sugar Maple.

With learning experiences such as this one, more students have been enrolling in Discovery Charter

School, Sewell said. Next year another section will be added to try and meet some of the demand.

"The interest in the school has been overwhelming," Sewell said. •

Colby Elementary School
COLBY SCHOOL DISTRICT

For the past three school years, staff and students at the high school, middle school, and elementary school in the Colby School District have challenged each other to see which building can reduce its electricity consumption the most. During the 2012-13 school year, Colby Elementary School won the challenge handily by reducing its electricity usage by 8.6 percent.

Recently, the focus by students and staff on energy savings at Colby Elementary School has expanded to include efforts to reduce waste through composting and recycling. The environmental focus has also extended beyond the school walls.

The use of area parks, natural resources, and the building of several gardens has added to the students' environmental education at the elementary school.

The school has made big strides in reducing food waste during meal times. The school worked with its waste removal service to allow them to recycle milk cartons, and compost hundreds of pounds of food waste. In one lunch period alone, the school collected 15 pounds of food waste — 15 pounds that were composted instead of sent to the landfill.

The school is committed to making these efforts a part of the school culture. Whenever necessary, they hold an assembly to discuss a new initiative. Once it is presented to the entire school, teachers give small group presentations at each grade level (19 of the school's teachers have received in-depth training on topics such as energy education, renewable energy, energy efficiency, biomass energy, and education for sustainability).



ABOVE LEFT Students from Colby Elementary School weed the school's raised beds.
ABOVE RIGHT Students enjoy lettuce from the school's gardens.



ABOVE The Lake Mills Elementary School is designed to maximize the use of natural light throughout the building.

“The students understand why we are doing it and will more likely remember to do it, and then it just becomes a habit,” said principal Brenda Medenwaldt.

Another project that has caught on is the development of an outdoor classroom. This space includes benches and an area for an entire class and also features five “cold frames” for growing vegetables. The cold frames are small, raised beds that have a cover that can be easily opened or closed. When closed, the cold frames function like greenhouses and protect plants from cold temperatures. The structures allow the school to extend the growing season a couple of months. Vegetables such as onions and cabbage are used by the school kitchen.

Last year the second-grade curriculum included a topic on growing plants. They grew lettuce and had a “lettuce feast” with the local retirement center. For many people, “lettuce” and “feast” may not belong in the same sentence but teacher Jean Rosemeyer said her students were very excited about growing the lettuce.

“The students love to be outside and we’re growing something that is healthy for them.” Rosemeyer said. “It just makes everyone smile.”

Medenwaldt sees the students’ excitement as well.

“After school, while waiting for their parents to pick them up, they will run down to see if their plants are growing,” Medenwaldt. “Some students bring their parents and want to show everyone the garden they planted.” •

Lake Mills Elementary School

LAKE MILLS SCHOOL DISTRICT

The Lake Mills Area School District has been establishing itself as a leader in building cutting-edge, energy efficient schools. In 2008, the district renovated and expanded its middle school, in the process, turning it into a certified Platinum LEED, Energy Star, and Wisconsin Green & Healthy School.

The district took these efforts even further when it built its new elementary school. The school is the first and only school in the nation to pilot the LEED v4 Beta program. LEED, or Leadership in Energy & Environmental Design, is a program developed by the U.S. Green Building Council in an effort to promote and support the construction of green buildings. The LEED v4 program is a new program available to help organizations build the next generation of environmentally

Green & Healthy Schools

Wisconsin has been a leader in environmental education and providing students with healthy learning facilities. Schools in Wisconsin can be formally recognized for their efforts by participating in Green & Healthy Schools, which is Wisconsin’s state recognition program for K-12 schools.

Participants choose their own goals and proceed at their own pace, with support and information from partner agencies and providers. Participants may work toward state recognition, toward nomination for a federal Green Ribbon Schools Award, or both. The same application form is used for all, and the eligibility questions let staff know to which group a school belongs.

Green & Healthy Schools Wisconsin has nine focus areas in which schools may document their achievements. Schools reaching the Sugar Maple level are reviewed each year for possible nomination to the federal Green Ribbon Schools Award program. Green & Healthy Schools Wisconsin does not give certificates for districts, but they may wish to compete for a U.S. Department of Education District Sustainability Award. District Sustainability Awards are given annually at the Green Ribbon Schools award ceremony. Since 2012, all 14 schools nominated by Wisconsin became Green Ribbon Schools, and three school districts have received the District Sustainability Award. □

For more information, go to GHSWisconsin.org or contact the Green & Healthy Schools Wisconsin coordinator at DNRGHSWisconsin@wisconsin.gov or 608-267-7622.



sustainable buildings.

Every aspect of Lake Mills Elementary School, literally from the school grounds to the building's roof, is designed to maximize student learning and be a model of sustainability. The grounds are landscaped with native plants, which, in addition to not needing mowing, also don't need to be watered. The grounds are designed to contain 100 percent of the storm water

onsite via rain gardens. The roof features a layer of vegetation that absorbs heat and naturally insulates the building. The roof is also fitted with solar panels, which generate about enough energy to power the computer lab.

The school building was constructed with recycled and non-toxic materials. For instance, carpeting is made with a special low-volatile material and 98 percent of the steel used in the building is recycled. The school is also fitted with a geothermal

system for heating and cooling the building, which uses an estimated 50 percent less energy than traditional heating and cooling systems. Solar is also used to heat water.

All of these features are impressive but just as impressive is how the school is being used as an educational resource. Principal Amanda Thompson said that students have been educated on the various features and efforts taking place at their school.

"As we were introducing these different elements of the school,

Middleton-Cross Plains Area School District Nationally Recognized

For years, staff, students, and school leaders in the Middleton-Cross Plains Area School District have worked to make their facilities energy efficient, provide healthy learning environments for students, and offer enriching environmental education opportunities. For its work, the district, which has 10 school buildings, and serves 6,622 students, was recognized by the Green Ribbon Schools program with the District Sustainability Award.

Deb Weitzel, a former science teacher who taught at Middleton High School for 34 years, wrote the winning application. She said that at about the beginning of the 2000s, the district won an award to replace some infrastructure like old heating and air conditioning systems with energy efficient systems.

"Over the last 10 years, we've saved more than \$10 million in energy costs," Weitzel said.

This effort started the district down a path towards energy savings and eventually a focus on environmental education and behavioral changes. Once one building installed a couple of solar panels, Weitzel said, student learning really got started. She remembers one of the first efforts toward energy efficiency started with her students. Through a grant from Environmental Education in Wisconsin and a company called Rapid Improvement, Weitzel's science students received tools to monitor energy usage in the high school. Students discovered that with a slight change in behavior, energy consumption by the science area in the high school could be reduced by 12 percent if teachers were more mindful about when they had classroom lights on.

"Students went to the teachers and asked them to change their habits," Weitzel said. "It began with the students."

Today, each of the 10 schools in the district is an Energy Star school — one of only two districts in the state. Last year, Park Elementary School was recognized as a Green Ribbon School. One of the focuses of Park Elementary

School and other schools in the district is environmental education. When Weitzel taught at Middleton High School, she was an advocate for outdoor learning.

That tradition continues at the school as classes like freshman biology, AP Environmental Studies, and various photography and English classes have regular outdoor projects.

Students at Middleton High School often visit the Pheasant Branch Conservancy, a 160-acre natural area that borders the school's campus. Students in the freshman biology classes visit the conservancy and do data collection in the prairies during a scientific methods unit. The students then revisit the natural area and help with conservation efforts, such as removing invasive species.

Classes in the humanities get involved as well. English classes visit the site to conduct research for essays about the conservancy and be inspired to write nature poems over the course of the four seasons. The high school's three photography classes learn how to take nature photos in the conservancy. Through a partnership with the Friends of Pheasant Branch Conservancy, students enter their photos into a contest to have their photos printed in an annual calendar. Poetry from English classes is also included in the calendar.

"When students work outside, they see and experience things they never would in a classroom," Weitzel said. □



students were learning about the green features in and outside of their classrooms,” Thompson said. “In our school, the energy conservation efforts and education efforts are closely tied together.”

One of the aspects of the school that teacher Deb Galsted appreciates is the amount of natural light that comes into the building. Each classroom is fitted with a large picture window. The school is constructed at an east-west angle to maximize daylight and windows are arranged so natural light makes its way into all parts of the building. In addition to the large picture windows in each classroom, a clerestory, or long row of windows, run the entire length of the second floor.

“Sunlight lifts the spirits and it’s good for teaching,” Galsted said.

Perhaps most importantly, the school is proving that it is a healthy learning environment and the rate of absenteeism has been reduced. As studies show, absenteeism among teachers and students plays a signifi-



ABOVE The Lake Mills Elementary School features a green roof, which helps reduce rainwater run-off and improves the building’s insulation.

cant role in student achievement.

Galsted said when you walk into the school, you can tell it isn’t your average school building. There are nooks for students to read, and small groups to learn, an open spiral staircase connects the first and second floor, and, in addition to an abun-

dance of natural light, colorful carpeting and walls brighten the school.

“You can’t help but be inspired teaching in a building like this,” Galsted said. ■

Shelby Anderson is editor of Wisconsin School News.

Providing WISCONSIN SCHOOL DISTRICTS with INNOVATIVE SOLUTIONS for more than 35 years.



MASTER PLANNING • FACILITY ASSESSMENTS • REFERENDUM • ENERGY UPGRADES • DESIGN • RENOVATION • CONSTRUCTION

www.hoffman.net

Hoffman[®]
Planning, Design & Construction, Inc.

Appleton, Wisconsin
800.236.2370

REGULAR MEETING MINUTES
 BOARD OF EDUCATION – SCHOOL DISTRICT OF COLBY
 MONDAY, JULY 20, 2015
 COLBY DISTRICT/EDUCATION CENTER

The Regular School Board Meeting on July 20, 2015 was called to order at 7:00 PM at the Colby District Education Center by Board President, William Tesmer. Members present were: William Tesmer, Deb Koncel, Lavinia Bonacker, Eric Elmhorst, Jennifer Lopez, Cheryl Ploeckelman and Seth Pinter. Also present were Superintendent Steven Kolden and Kristen Seifert.

The meeting notice was posted according to the requirements of the open meeting law.

The Board received a check from Robbie and Melissa Smazal for a playground donation.

Mr. Kolden updated the Board on the state budget; WASB resolutions; WASB service information; CESA 10 will be present at the August Board meeting; change the consent agenda to combine the Board member attendance and expenses into one agenda item; CESA 10 Annual Meeting is scheduled for August 6 at 7 PM.

Mr. Kolden updated the Board on the Strategic Planning Progress. The District will address staff morale by including staff in the planning of District events i.e. the end of year celebration. The District will also work on including retirees in these events.

Motion by Mr. Elmhorst, seconded by Mrs. Bonacker to approve the Consent Agenda as presented moving 6.01 - Minutes from the June 15, 2015 minutes to regular business:

Board member, Cheryl Ploeckelman, Lavinia Bonacker, Deb Koncel, Seth Pinter, Eric Elmhorst, and Jennifer Lopez attendance and travel expenses to attend the WASB Key Works of School Boards on August 12 at CESA 10 in Chippewa Falls.

Resignation of Cody Meyers, ELL Coordinator

Retirement of Robert Blume, High School Custodian

Resignation of James Weideman, Technology Education Teacher

Resignation of Tim Rau, High School Golf Coach

Hire of Brook Ruge, Varsity Volleyball Coach

Hire of Nathan Larsen, C-team Volleyball Coach

Hire of Mike Sazama, C-team Boys' Basketball Coach

Hire of Sarah Adams, 7th Grade Science Teacher

Hire of Dora Szemborski, Business Education Teacher, Carl Perkins Staff Coordinator, Newspaper Advisor, Yearbook Advisor, FBLA Advisor.

Voice vote – motion carried.

Motion by Mrs. Koncel, seconded by Mr. Elmhorst to approve the Minutes from the June 15, 2015 Regular Board of Education meeting. Roll call – Motion carried 6-0-1; Yes – Mr. Elmhorst, Mrs. Lopez, Mrs. Koncel, Mrs. Bonacker, Mr. Pinter, Mr. Tesmer; No-None; Abstain-Mrs. Ploeckelman.

Motion by Mr. Pinter, seconded by Mrs. Bonacker to approve the receipts and invoices as presented. Voice vote – motion carried.

Financial Report

TOTAL REVENUE – JUNE		\$ 3,185,310.71
NICOLET NATIONAL BANK-BANK WIRES - FEDERAL w/SS	1864-1876	\$ 130,425.48
FORWARD FINANCIAL BANK-MANUAL CHECK	163	\$ 58,020.53
REGULAR CHECKS	31078-31098	\$ 20,162.12
DIRECT DEPOSITS	9058768-9059093	\$ 264,343.78
ADVANTAGE BANK-REGULAR CHECKS	69333-69527	\$ 516,867.66
TOTAL CHECKS TO BE APPROVED		\$ 989,819.57

Mrs. Ploeckelman reported on her attendance at a Backpack for Kids informational meeting and the Achievement Gap meeting at the Leadership Conference.

Mr. Kolden reviewed the 2014-15 budget.

Mr. Kolden updated the Board on the 2015-16 budget and will have a draft in August.

Mr. Kolden reviewed the difference in the approval process for the Employee Handbook versus Board Policies. The Board would like a WASB opinion on Employee Handbook edits; possibly a 2nd reading and/or sent to Policy Committee.

The Board discussed the revised Handbook Part II, Section 8.01(1) – Post Employment Benefits Eligibility language that was approved at the June meeting.

Mr. Kolden updated the Board on the referendum timeline that was developed by the Referendum Planning Ad Hoc Committee.

Motion by Mrs. Ploeckelman, seconded by Mrs. Koncel to approve revisions to Handbook Appendix Part VI, 2.04 – Teacher Substitute Pay as presented. Voice vote – motion carried.

Motion by Mrs. Bonacker, seconded by Mr. Elmhurst to approve revisions to Handbook Appendix Part III, 7.04 – Food Service Personnel Extra Duty Pay to Food Service and Custodial Personnel Extra Duty Pay as presented. Voice vote – motion carried.

Motion by Mr. Elmhurst, seconded by Mrs. Koncel to accept with gratitude the generous donation of playground equipment. Voice vote – motion carried.

Motion by Mr. Elmhurst, seconded by Mrs. Bonacker to approve the Act 32 Project Timeline and Act 32 project RFP for posting as recommended by Facilities Committee. Voice vote – motion carried.

Motion by Mrs. Ploeckelman, seconded by Mr. Elmhurst to approve the first readings of policies #166, 180, 345.11, 522.2, 671.2 and 831. Voice vote – motion carried.

Motion by Mr. Elmhurst, seconded by Mrs. Ploeckelman to approve the deletion of Exhibit #671.2 and the addition of policy #347.1. Voice vote – motion carried.

Motion by Mrs. Ploeckelman, seconded by Mr. Elmhurst, to convene in closed session per Wisconsin Statutes 19.85 c) Considering employment, promotion, compensation or performance evaluation data of any public employee over which the governmental body has jurisdiction or exercises responsibility. e) deliberating or negotiating the purchasing of public properties, the investing of public funds, or conducting other specified public business, whenever competitive or bargaining reasons require a closed session.

10.01 Agenda Items Moved From Consent Agenda

10.02 Agenda Items Moved from Action Information

10.03 2015-16 Support Staff 1.62% Wage Increase with Specific Individual Adjustments

10.04 2015-16 Executive Support Staff 1.62% Wage Increase with Specific Individual Adjustments

10.05 Sale Offer for Neillsville Property and Potential Counter Offer

10.06 Update on Individual Employee Resignation

10.07 Superintendent Evaluation

Roll call vote – Motion carried 7-0; Yes – Mrs. Koncel, Mrs. Bonacker, Mr. Tesmer, Mr. Elmhurst, Mrs. Lopez, Mr. Pinter, Mrs. Ploeckelman; No- None; Abstain-None. 9:03 PM

Motion by Mr. Elmhurst, seconded by Mrs. Ploeckelman, to move from closed session and to reconvene in open session as previously announced. Voice vote - motion carried. 10:10 PM

Motion by Mr. Elmhurst, seconded by Mrs. Lopez, to approve a 1.62% wage increase for support staff with individual adjustments as discussed. Roll call vote – Motion carried 6-0-1; Yes – Mrs. Koncel, Mrs. Bonacker, Mr. Elmhurst, Mrs. Lopez, Mr. Pinter, Mrs. Ploeckelman; No- None; Abstain-Mr. Tesmer.

Motion by Mrs. Ploeckelman, seconded by Mrs. Koncel to approve a 1.62% wage increase for executive support staff with individual adjustments as discussed. Voice vote – motion carried.

Motion by Mrs. Ploeckelman, seconded by Mrs. Bonacker to counter the purchase offer for the Neillsville property as agreed and allow the superintendent and board president to negotiate a final sale offer within the parameters decided by the board. Voice vote – motion carried.

Motion by Mr. Pinter, seconded by Mrs. Bonacker to accept the resignation of Kevin Bedroske submitted in June. Voice vote – motion carried.

Scheduled Board of Education Meetings:

- Financial Affairs Committee Meeting – August 17, 2015 @ 6:30 PM
- Regular Board of Education Meeting – August 17, 2015 @ 7:00 PM
- Policy and Curriculum Committee Meeting –
- Personnel Committee Meeting –
- Facilities and Transportation Committee Meeting – August 12, 2015 @ 10 AM
- Referendum Planning Small Group –

Motion by Mrs. Koncel, seconded by Mr. Elmhorst, to adjourn the meeting. Voice vote - motion carried. Meeting adjourned at 10:15 PM.

Respectfully Submitted:

Eric Elmhorst, Clerk

Kristen Seifert, Reporting Secretary

OUT-OF-STATE FIELD TRIP

Teacher/Advisor Mr. Kevin J. Spindler

Group CHS Madrigal Troupe

Destination Renaissance Festival in Shakopee, MN

Date of Trip August 29, 2015 Leave 6:00 AM Return 9:00 PM

Purpose of the trip Student participation, writing the script, performance nuances to add to this year's Madrigal Dinner. Live performance in the Renaissance / Baroque time frames of Europe

Number of students attending 25-30

Number of adults/chaperones 5-10

District Expenses none

Non-District Expenses student individual expense

Administrative Approval Manni Duedel 8-12-15

To: Dr. Steve Kolden, District Administrator ,Colby School Board

From: Kevin J. Spindler, Colby HS Vocal/General Music Teacher

Re: Information regarding an Out-of-State Trip

The **Colby High School Madrigal Troupe** are looking for approval to attend the **Renaissance Festival** in Shakopee, Minnesota. We would be attending the Festival on Saturday, August 29, 2015. There are 25 students, who would like to attend along with Mr. Spindler and parent chaperones from the Choir Parents Organization to help fill up the bus. The bus will depart Colby approximately 6:00-6:15 a.m. and leave the **Renaissance Festival** between 6- 7:00 p.m. and arriving back in Colby by 8-9:00p.m. We are not asking for the board's assistance for any expenses incurred on the trip. The trip will be paid for through fundraising and student expense.

This is a new venture for the students and myself as I would like to see more student participation in planning the dinner, writing the script, and inventing new innovative nuances to make this year's **18th Annual Madrigal Feast** a huge success! Please contact me with any questions or concerns you may have. (715- 223-2338 ext. 4249)

Thank-you for your time and consideration

Musically,
Kevin J. Spindler
Colby High/Middle School Vocal/General Music Teacher

OUT-OF-STATE FIELD TRIP

Teacher/Advisor Mr. Kevin Spindler; Mr. Nathani Larsen

Group Coalition (Show Choir, Show Band, Show Crew)

Destination Crawfordsville, Indiana; West Liberty, Iowa; Herscher, Illinois; Naperville, Illinois

Date of Trip Nov. 14th Leave depending Return February 13th
on trip and availability of students

Purpose of the trip Music Departments working together, maintain National exposure, competitions with different judging panels, new show choir experiences, opportunity - opportunity - opportunity - great musical knowledge and experience of educational growth.

Number of students attending 65-75

Number of adults/chaperones 5-10

District Expenses yellow school buses

Non-District Expenses student fundraising and student individual expense

Administrative Approval Maria Duedel 8-12-15

To: Dr. Steve Kolden, District Administrator ,Colby School Board

From: Kevin J. Spindler, Colby HS/MS Vocal/General Music Teacher,
and Nathan Larsen, Colby, MS/HS Instrumental Teacher

Re: Information regarding an Out-of-State Trips

The Colby High School Coalition (Show Choir, Show Band, and Show Crew) are looking for approval to attend 4 out of state show choir competitions in: Crawfordsville, Indiana, West Liberty, Iowa, Naperville, Illinois, and Herscher, Illinois. These competitions are a part of the Music Departments working hand-in hand through our Show Choir competition season. There will be between 65 to 75 students attending along with Mr. Spindler, Mr. Larsen, and chaperones from the Choir Parents Organization to help fill up the two buses. Attached will be the basic itineraries for each of the festivals. We may be also spending one night, possibly another night, depending on if the show choir makes the evening competition or not. Since the organization has now competed at the National Show Choir Level, it is necessary for the group to have exposure from other states competitions. As you know, the Coalition has done extremely well at the out of the state competitions receiving both 3rd Runner up and Grand Champion two years ago in Illinois. Busing for these trips are two yellow school buses to each event. These two school buses are budgeted through school with each student paying \$50 for the class for transportation expenses. We are not asking for the board's assistance for any other expenses incurred on the trip, just the yellow bus cost. The rest of the trips will be paid for through fundraising and student expense.

The show choir students will also be performing/competing at Altoona, Chippewa Falls, and Sauk Prairie (Wisconsin) as well. Please contact me with any questions or concerns you may have. (715-223-2338 ext. 4249)
Thank-you for your time and consideration.

Musically,

Kevin J. Spindler

Colby High/Middle School Vocal/General Music Teacher

Basic itineraries for the Festivals School year 2015-2016

1. November 14: Southmont Show Choir Invitational: Crawfordsville, Indiana (7 hours)

Itinerary

- November 13: Two Buses to Crawfordsville leaving after school
Spend one night
- November 14: Festival All Day
Leave for home after the festival
possibly spend another night (work out with Bus Co.)

2. February 6: West Liberty Stars on Stage: West Liberty, Iowa (5 hours 15 min.)

Itinerary

- February 5 : Two Buses to West Liberty, IA leaving after BBB Game
Spend one night
- February 6: Festival All Day
Leave for home after the festival
possibly spend another night (work out with Bus Co.)

3. February 13: Naperville North Clash of the Sequins Festival: Naperville, Illinois

Itinerary

- February 12: Two Buses to Naperville, Illinois leaving after school
Spend one night
- February 13: Festival All Day
Leave for home after the festival
possibly spend another night (work out with Bus Co.)

4. March 19: Herscher Sing & Swing Invitational: Herscher, Illinois(5 hours 30min.)

Itinerary

- March 18: Two Buses to Herscher, Illinois leaving after school
Spend one night
- March 19: Festival All Day

Leave for home after the festival
possibly spend another night (work out with Bus Co.)

SCHOOL DISTRICT OF COLBY EDUCATION CENTER

Dr. Steven Kolden, Superintendent

Request To: * Hire Transfer Expand Employment
(Please check appropriate assignment)

Purpose: To request approval for persons who have been transferred to a new position, have current assignment expanded, or tendered employment. In order to insure compliance with federal and state laws, clearance must be obtained from the human resources director prior to the person reporting to work.

Walters, Maeghan _____ HS Tech Ed. Teacher _____
Employee's Name: Last, First Position and Building Location

FTE: 1.0 _____ Continuing Position? * Yes No
(If no, Start and End Dates) _____ through _____

Administration * Teacher Long Term Sub Instructional Aide Clerical Maintenance Food Service Coach
 Other: _____

Work schedule for hourly staff (to include scheduled lunch break) _____ a.m. to _____ p.m.
Desired start date: Aug. 2015 _____ Is this a support staff position? Yes * No If yes, please attach work calendar.
Does this position require a substitute? * Yes No Work Permit Attached (If Needed) Yes No
Indicate all account number(s) and percent of time for each account number to charge wages to (including grant accounts)

Hire Requested by:

Marcia Diedrich *Marcia Diedrich* _____ 7/30/2015 _____
Immediate or Program Supervisor's Signature Date
Steven Kolden _____
Superintendent's Signature Date

Reason for position vacancy:

Jimmy Weideman resigned.

Date position was vacated:

June 30, 2015

Number of candidate files:

2

Number of candidates after screening:

2

Number of candidates interviewed:

2

Person vacating position:

Jimmy Weideman

Recruitment area:

WECAN

Person(s) doing screening:

Marcia Diedrich, Jim Hagen

Person(s) doing interviewing:

Marcia Diedrich, Jim Hagen, Kevin Pankratz

Candidate Biography / Resume & Application Attached

Employee needs the following:

* Web Page Access * Email * Phone Extension
* Student Information System * Lunch Account * FOB/Key

OFFICE USE ONLY

SALARY: _____

CODE: _____

PAYROLL
 BOOKKEEPER
 ACCT. PAYABLE

SCHOOL DISTRICT OF COLBY EDUCATION CENTER

Dr. Steven Kolden, Superintendent

Request To: Hire Transfer Expand Employment
(Please check appropriate assignment)

Purpose: To request approval for persons who have been transferred to a new position, have current assignment expanded, or tendered employment. In order to insure compliance with federal and state laws, clearance must be obtained from the human resources director prior to the person reporting to work.

Kallberg Mary Employee's Name: Last, First COOK - HS Kitchen Position and Building Location

FTE: 1 day a week Continuing Position? Yes No
68 days
(If no, Start and End Dates) _____ through _____

Administration Teacher Long Term Sub Instructional Aide Clerical Maintenance Food Service Coach
 Other: _____

Work schedule for hourly staff (to include scheduled lunch break) 6:00 a.m. to 1:30 p.m.

Desired start date: Aug 26 Is this a support staff position? Yes No If yes, please attach work calendar.

Does this position require a substitute? Yes No Work Permit Attached (If Needed) Yes No

Indicate all account number(s) and percent of time for each account number to charge wages to (including grant accounts)

Hire Requested by:

Laurie Hasjard
Immediate or Program Supervisor's Signature

11-28-15
Date

Steven Kolden
Superintendent's Signature

Date

Reason for position vacancy:
Barb Kelly hired fulltime

Person vacating position: Barb Kelly

Date position was vacated:
11-28-15

Recruitment area: Food Service

Number of candidate files:

Person(s) doing screening: Laurie Hasjard

Number of candidates after screening:

Person(s) doing interviewing: Laurie Hasjard

Number of candidates interviewed:

Candidate Biography / Resume & Application Attached

Employee needs the following:

Web Page Access Email Phone Extension
 Student Information System Lunch Account FOB/Key

OFFICE USE ONLY

SALARY: _____

CODE: _____

PAYROLL
 BOOKKEEPER
 ACCT. PAYABLE

SCHOOL DISTRICT OF COLBY EDUCATION CENTER

Dr. Steven Kolden, Superintendent

Request To: Hire Transfer Expand Employment
(Please check appropriate assignment)

Purpose: To request approval for persons who have been transferred to a new position, have current assignment expanded, or tendered employment. In order to insure compliance with federal and state laws, clearance must be obtained from the human resources director prior to the person reporting to work.

Kitty Barb
Employee's Name: Last, First COOK HS -Kitchen
Position and Building Location

FTE: 1 Continuing Position? Yes No

(If no, Start and End Dates) _____ through _____

Administration Teacher Long Term Sub Instructional Aide Clerical Maintenance Food Service Coach
 Other: _____

Work schedule for hourly staff (to include scheduled lunch break) 6:00 a.m. to 1:30 p.m.

Desired start date: Aug. 26 Is this a support staff position? Yes No If yes, please attach work calendar.

Does this position require a substitute? Yes No Work Permit Attached (If Needed) Yes No

Indicate all account number(s) and percent of time for each account number to charge wages to (including grant accounts)

Hire Requested by:

Laurie Heggard
Immediate or Program Supervisor's Signature

7-28-15
Date

Steven Kolden
Superintendent's Signature

Date

Reason for position vacancy:
Darlene Frome Retired

Person vacating position: Darlene Frome

Date position was vacated:
6-5-15

Recruitment area: Food Service

Number of candidate files: 3

Person(s) doing screening: Laurie Heggard

Number of candidates after screening: 1

Person(s) doing interviewing: Laurie Heggard

Number of candidates interviewed: 3

Candidate Biography / Resume & Application Attached

Employee needs the following:

Web Page Access Email Phone Extension
 Student Information System Lunch Account FOB/Key

OFFICE USE ONLY

SALARY: _____

CODE: _____

PAYROLL
 BOOKKEEPER
 ACCT. PAYABLE

SCHOOL DISTRICT OF COLBY EDUCATION CENTER

Dr. Steven Kolden, Superintendent

Request To: Hire

Transfer

Expand Employment

(Please check appropriate assignment)

Purpose: To request approval for persons who have been transferred to a new position, have current assignment expanded, or tendered employment. In order to insure compliance with federal and state laws, clearance must be obtained from the human resources director prior to the person reporting to work.

Mehlberg, Greg
Employee's Name: Last, First

District Technology Coordinator
Position and Building Location

FTE: 1.0 Continuing Position? Yes No

(If no, Start and End Dates) _____ through _____

Administration Teacher Long Term Sub Instructional Aide Clerical Maintenance Food Service Coach
 Other: Executive Support (Part IV)

Work schedule for hourly staff (to include scheduled lunch break) 7:30 _____ a.m. to 4:00 _____ p.m.

Desired start date: 8/17/2015 Is this a support staff position? Yes No If yes, please attach work calendar.

Does this position require a substitute? Yes No Work Permit Attached (If Needed) Yes No

Indicate all account number(s) and percent of time for each account number to charge wages to (including grant accounts)

Hire Requested by:

Immediate or Program Supervisor's Signature

Date

Steven Kolden
Superintendent's Signature

8/11/2015
Date

Reason for position vacancy:

Resignation

Date position was vacated:

June, 2015

Number of candidate files:

3

Number of candidates after screening:

2

Number of candidates interviewed:

1

Person vacating position:

Jesse Meddaugh

Recruitment area:

State and Local

Person(s) doing screening:

S. Kolden

Person(s) doing interviewing:

J. Dirks, J. Meddaugh, S.Kolden

Candidate Biography / Resume & Application Attached

Employee needs the following:

Web Page Access

Email

Phone Extension

Student Information System

Lunch Account

FOB/Key

OFFICE USE ONLY

SALARY: _____

CODE: _____

PAYROLL

BOOKKEEPER

ACCT. PAYABLE

505 WEST SPENCE ST. • P.O. BOX 139 • COLBY, WI 54421-0139

PHONE 715.223.2301 • FAX 715.223.4539

SKOLDEN@COLBY.K12.WI.US

SCHOOL DISTRICT OF COLBY EDUCATION CENTER

Dr. Steven Kolden, Superintendent

Request To: Hire Transfer Expand Employment
(Please check appropriate assignment)

Purpose: To request approval for persons who have been transferred to a new position, have current assignment expanded, or tendered employment. In order to insure compliance with federal and state laws, clearance must be obtained from the human resources director prior to the person reporting to work.

Employee's Name: Last, First Green, Kathryn Position and Building Location HS Secretary

FTE: .5 Continuing Position? Yes No

(If no, Start and End Dates) _____ through _____

Administration Teacher Long Term Sub Instructional Aide Clerical Maintenance Food Service Coach
 Other: _____

Work schedule for hourly staff (to include scheduled lunch break) _____ a.m. to _____ p.m.

Desired start date: Aug, 2015 Is this a support staff position? Yes No If yes, please attach work calendar.

Does this position require a substitute? Yes No Work Permit Attached (If Needed) Yes No

Indicate all account number(s) and percent of time for each account number to charge wages to (including grant accounts)

Hire Requested by:

Marcia Diedrich
Immediate or Program Supervisor's Signature

8-7-15
Date

Steven Kolden
Superintendent's Signature

Date

Reason for position vacancy:

Tami Seefluth resignation

Person vacating position:

Tami Seefluth

Date position was vacated:

Summer 2015

Recruitment area:

Local paper

Number of candidate files:

17

Person(s) doing screening:

Marcia Diedrich, Jim Hagen, Kathy Polzin

Number of candidates after screening:

4

Person(s) doing interviewing:

Marcia Diedrich, Jim Hagen, Kathy Polzin

Number of candidates interviewed:

3

Candidate Biography / Resume & Application Attached

Employee needs the following:

Web Page Access Email Phone Extension
 Student Information System Lunch Account FOB/Key

OFFICE USE ONLY

SALARY: _____

CODE: _____

PAYROLL
 BOOKKEEPER
 ACCT. PAYABLE

SCHOOL DISTRICT OF COLBY EDUCATION CENTER

Dr. Steven Kolden, Superintendent

Request To: Hire

Transfer

Expand Employment

(Please check appropriate assignment)

Purpose: To request approval for persons who have been transferred to a new position, have current assignment expanded, or tendered employment. In order to insure compliance with federal and state laws, clearance must be obtained from the human resources director prior to the person reporting to work.

Hoppamnn, Nicole
Employee's Name: Last, First

ELL Coordinator
Position and Building Location

FTE: 1.0 Continuing Position? Yes No

(If no, Start and End Dates) _____ through _____

Administration Teacher Long Term Sub Instructional Aide Clerical Maintenance Food Service Coach
 Other: _____

Work schedule for hourly staff (to include scheduled lunch break) 8:00 _____ a.m. to 4:00 _____ p.m.

Desired start date: August, 2015 Is this a support staff position? Yes No If yes, please attach work calendar.

Does this position require a substitute? Yes No Work Permit Attached (If Needed) Yes No

Indicate all account number(s) and percent of time for each account number to charge wages to (including grant accounts)

Hire Requested by:

Immediate or Program Supervisor's Signature

Date



Superintendent's Signature

8/13/2015
Date

Reason for position vacancy:

Resignation

Date position was vacated:

June 2015

Number of candidate files:

4

Number of candidates after screening:

2

Number of candidates interviewed:

1

Person vacating position:

Cody Meyers

Recruitment area:

Local & State (WECAN)

Person(s) doing screening:

S. Kolden,

Person(s) doing interviewing:

S. Kolden, S. Penry, D Bloome

Candidate Biography / Resume & Application Attached

Employee needs the following:

Web Page Access Email Phone Extension

Student Information System Lunch Account FOB/Key

OFFICE USE ONLY

SALARY: _____

CODE: _____

PAYROLL
 BOOKKEEPER
 ACCT. PAYABLE

**FINANCIAL REPORT
 BOARD OF EDUCATION MEETING
 AUGUST 17, 2015**

TOTAL REVENUE -
 JULY \$ 339,248.37

NICOLET NATIONAL BANK -
 BANK WIRES - FEDERAL w/SS N/A N/A

FORWARD FINANCIAL

MANUAL CHECK	164	\$ 90,116.74
REGULAR CHECKS	31105-31112	\$ 10,356.74
DIRECT DEPOSITS	900059094-900059192	\$ 78,683.15
	900059193-900059265	\$ 71,091.17
	290-362	\$ 79,930.07
	900059412-900059483	\$ 43,346.54

ADVANTAGE BANK-

REGULAR CHECKS	69528-69548	\$ 15,413.56
	69549-69571	\$ 18,325.32
	69572-69590	\$ 11,839.01
	69591-69594	\$ 1,671.40
	69595-69615	\$ 47,353.88
	69616-69622	\$ 12,035.21
	69623-69628	\$ 4,034.22
	69629-69682	\$ 85,311.65

TOTAL CHECKS TO BE APPROVED \$ 569,508.66

SCHOOL DISTRICT OF COLBY
GENERAL INPUT CASH RECEIPTS - UPDATE REPORT, JULY 2015-2016

BATCH	DESCRIPTION	FISCAL YEAR	POST DATE	BATCH ORIGIN	STATUS
JULY	JULY CASH REPORT	2015-2016	07/31/2015	Batch Entry	Batch

BANK	LINE	NAME/PROJ	DESCRIPTION/REFERENCE	ADDT'L DESCRIPTION	ACCOUNT	RECEIPT#	ENTRY DT	DEBIT AMOUNT	CREDIT AMOUNT
BNK2	1		COMMUNITY MEMBER	SALE OF NON CAP	10 R 800 264 500000 000	229402	07/16/15	0.00	27.50
BNK2	2		CESA 10	MEDICAID	10 A 000 000 715420 000	229403	07/14/15	0.00	56,314.00
BNK2	3		CESA 10	MEDICAID REVENUE	27 A 000 000 715420 000	229403	07/14/15	0.00	44,160.27
BNK2	4		WI DPI	JUNE CLAIM	50 A 000 000 715600 000	229404	07/20/15	0.00	5,400.16
BNK2	5		WI DPI	JUNE CLAIM	50 A 000 000 715600 000	229405	07/20/15	0.00	530.94
BNK2	6		WI DPI	JUNE CLAIM	50 A 000 000 715600 000	229406	07/20/15	0.00	1,158.76
BNK2	7		WI DPI	MAY CLAIM	50 A 000 000 715600 000	229407	07/20/15	0.00	1,564.30
BNK2	8		WI DPI	FOOD SERVICE CLAIM	50 A 000 000 715600 000	229408	07/20/15	0.00	25,913.22
BNK2	9		WI DPI	MAY CLAIM	50 A 000 000 715600 000	229409	07/20/15	0.00	5,128.13
BNK2	10		WI DPI	SUMMER SCHOOL CLAIM	50 A 000 000 715600 000	229410	07/27/15	0.00	3,608.61
BNK2	11		WI DPI	CN SCHOOL FOOD EQUI	50 A 000 000 715600 000	229411	07/20/15	0.00	3,095.00
BNK2	12		CIYT OF COLBY	JUNE MOBILE HOME TA	10 A 000 000 713200 000	229412	07/21/15	0.00	225.45
BNK2	13		WIAA	TRAVEL ALLOWANC E	10 A 000 000 713200 000	229413	07/20/15	0.00	298.40
BNK2	14		K. PETERSON	HEALTH INSURANCE	10 E 800 290 292000 000	229414	07/24/15	0.00	44.44
BNK2	15		N. MARCOTT	HEALTH INSURANCE	10 E 800 290 292000 000	229415	07/24/15	0.00	85.00
BNK2	16		M KUTZKE	HEALTH INSURANCE	10 E 800 290 292000 000	229416	07/24/15	0.00	276.15
BNK2	17		C. HUEBNER	HEALTH INSURANCE	10 E 800 290 292000 000	229417	07/24/15	0.00	94.68
BNK2	18		THORP MENNONITE CHURCH	FACILITY FEE	10 R 800 293 500000 000	229418	07/24/15	0.00	5,075.25
BNK2	19		ROBBIE SMAZAL	DONATION FOR PLAYGR	21 R 800 291 500000 938	229420	07/24/15	0.00	42,917.00
BNK2	20		INDIANHEAD	MEALS/MAY	50 A 000 000 713200 000	229420	07/24/15	0.00	1,670.75
BNK2	21		SCHOOL DISTRICT OF ABBOTSFORD	COOP PROGRAMS	10 A 000 000 713200 000	229421	07/24/15	0.00	10,344.75
BNK2	22		EMC	WC PAYMENT	10 R 800 964 500000 000	229422	07/24/15	0.00	162.72
BNK2	23		EMC	WC PAYMENT	10 R 800 964 500000 000	229423	07/24/15	0.00	162.72
BNK2	24		COBRA REIMBURSEMENT		10 L 000 000 811632 000	229424	07/24/15	0.00	34.15
BNK5	25		STUDENTS	LUNCH MONEY	50 R 800 251 257220 000	229425	07/08/15	0.00	54.10
BNK5	26		COMMUNITY MEMBERS	REC SWIM	80 R 800 271 300000 000	229426	07/15/15	0.00	175.00
BNK5	27		COMMUNITY MEMBERS	SWIM LESSONS	80 R 800 271 300000 000	229427	07/15/15	0.00	2,930.00
BNK2	28		STUDENTS	TRACTOR SAFETY	10 R 800 292 131000 000	229428	07/15/15	0.00	360.00
BNK5	29		COMMUNITY MEMBERS	SUMMER SWIM LESSONS	80 R 800 271 300000 000	229429	07/22/15	0.00	2,290.00
BNK2	30		STUDENTS	SUMMER BOWLING	10 R 800 292 500000 000	229430	07/24/15	0.00	1,050.00
BNK5	31		STUDENTS	LUNCH MONEY	50 R 800 251 257220 000	229431	07/31/15	0.00	502.45
BNK0	32		ACB	INTEREST JULY 2015	10 R 800 280 500000 000	229432	07/31/15	0.00	56.84
BNK5	33		NICOLET NATIONAL BANK	INTEREST	10 R 800 280 500000 000	229433	07/31/15	0.00	4.51
BNK3	34		NICOLET NATIONAL BANK	INTEREST	39 R 800 280 281000 000	229434	07/31/15	0.00	10.06
BN72	35		NICOLET NATIONAL BANK	INTEREST	72 R 800 280 420000 000	229435	07/31/15	0.00	6.41

SCHOOL DISTRICT OF COLBY
GENERAL INPUT CASH RECEIPTS - UPDATE REPORT, JULY 2015-2016

BATCH	DESCRIPTION	FISCAL YEAR	POST DATE	BATCH ORIGIN	STATUS
JULY	JULY CASH REPORT	2015-2016	07/31/2015	Batch Entry	Batch

BANK	LINE	NAME/PROJ	DESCRIPTION/REFERENCE	ADDT'L DESCRIPTION	ACCOUNT	RECEIPT#	ENTRY DT	DEBIT AMOUNT	CREDIT AMOUNT	
. . . CONTINUED										
BN46	36		NICOLET NATIONAL BANK	INTEREST	46 R 800 280 500000 000	229436	07/31/15	0.00	2.06	
BNK2	37		NICOLET NATIONAL BANK	INTEREST	10 R 800 280 500000 000	229437	07/31/15	0.00	352.16	
BNK2	38		WI DPI	DELAYED EQUALIZED A	10 A 000 000 715500 000	229439	07/27/15	0.00	115,716.00	
BNK2	39		DEPARTMENT OF REVENUE	COMPUTER AID	10 A 000 000 715500 000	229440	07/27/15	0.00	2,790.00	
BNK5	40		STUDENTS	SWIM LESSONS	80 R 800 271 300000 000	229459	07/30/15	0.00	55.00	
BNK5	41		COMMUNITY MEMBERS	REC SWIM	80 R 800 271 300000 000	229460	07/30/15	0.00	491.43	
BNK5	42		STUDENTS	ATHLETIC FEES	10 R 800 271 162000 000	229461	07/30/15	0.00	4,110.00	
42 LINE ENTRIES FOR BATCH NUMBER JULY								TOTALS FOR BATCH	0.00	339,248.37
								BATCH TOTAL DIFFERENCE	0.00	-339,248.37
42 LINE ENTRIES FOR 1 BATCH								GRAND TOTALS	0.00	339,248.37
								GRAND TOTAL DIFFERENCE	0.00	-339,248.37

***** End of report *****

Check Nbr	Vendor Name	Check Date	Invoice Number	Invoice Desc	PO Number	Invoice Amount	Check Amount
69528	CLOVERBELT CONFERENCE COMMISSI	07/21/2015	2015-2016	CLOVERBELT CONFERENCE ANNUAL DUES	0	1,700.00	1,700.00
10 E 800 940 162001 000				GENERAL FUND/ATHLETICS-GENERAL/DUES & FEES		1,700.00	
69529	CONSTRUCTIVE PLAYTHINGS	07/21/2015	5142450300	PUZZLES, SCISSORS, RUG, TIMERS	6001516001	609.89	609.89
27 E 100 411 152000 347				SPECIAL EDUC./EARLY CHILDHOOD/GENERAL SUPPLIES		45.93	
27 E 100 440 152000 347				SPECIAL EDUC./EARLY CHILDHOOD/NON-CAPITAL EQUIPMENT		563.96	
69530	DELL MARKETING LP	07/21/2015	XJPW45NN7	DELL MOBILE COMPUTING CART (CHROMEBOOK STORAGE)	1011516004	1,207.55	1,207.55
10 E 800 440 266000 000				GENERAL FUND/TECHNOLOGY COORD/PROJECTS/NON-CAPITAL EQUI		1,207.55	
69531	PAUL KNAUTZ	07/21/2015	MEDICAL		0	212.67	212.67
10 L 000 000 811200 000				GENERAL FUND/A/P ACCRUAL		212.67	
69532	NASCO	07/21/2015	453620	NUMBERED FLOOR TILES, SUBITIZING CARDS, MATH GAMES, FOAM DICE	3001516014	133.71	133.71
10 E 100 411 124000 141				GENERAL FUND/MATHEMATICS/GENERAL SUPPLIES		133.71	
69533	NCS PEARSON INC	07/21/2015	10285800	BRUININKS-OSERETSK Y STUDENT RECORD FORMS	6001516029	98.15	98.15
27 E 800 411 218100 341				SPECIAL EDUC./OCCUPATIONAL THERAPY/GENERAL SUPPLIES		98.15	
69534	NCS PEARSON INC	07/21/2015	10286031	GOLDMAN FRISTOE TESTS OF ARTICULATION, RECORDING BOOKLETS FOR TOLDP-4	6001516012	134.00	134.00
27 E 800 411 156600 341				SPECIAL EDUC./SPEECH/LANGUAGE/GENERAL SUPPLIES		134.00	
69535	NCS PEARSON INC	07/21/2015	10286114	Testing Material & Record forms	6001516015	565.06	565.06
27 E 800 411 156600 341				SPECIAL EDUC./SPEECH/LANGUAGE/GENERAL SUPPLIES		565.06	
69536	RAND McNALLY	07/21/2015	002680838	CLASSROOM ATLASES	5011415016	260.70	260.70
10 E 200 439 127000 000				GENERAL FUND/SOCIAL STUDIES/OTHER MEDIA		260.70	
69537	RAND McNALLY	07/21/2015	003176872	Classroom Atlas Sets	5011516019	557.00	557.00
10 E 200 439 127000 000				GENERAL FUND/SOCIAL STUDIES/OTHER MEDIA		557.00	

Check Nbr	Vendor Name	Check Date	Invoice Number	Invoice Desc	PO Number	Invoice Amount	Check Amount
69538	REALLY GOOD STUFF	07/21/2015	5128320	JUMBO LETTER STAMPS, REPRODUCIBLES	3001516012	119.64	119.64
10 E 100 411 122000 141				GENERAL FUND/ENGLISH/GENERAL SUPPLIES		119.64	
69539	RUDER WARE, L.L.S.C.	07/21/2015	201678	PROFESSIONAL SERVICES	0	88.50	88.50
10 E 800 310 231500 000				GENERAL FUND/BOARD OF ED. LEGAL/PERSONAL SERVICES		88.50	
69540	SCHOOL SPECIALTY	07/21/2015	208114557629	PENCILS, STAPLER, ERASERS, STICKERS, INCENTIVE PADS, GLUE STICKS, POST ITS, MONTHLY PLANNERS	6001516034	131.67	159.53
27 E 100 411 158100 341				SPECIAL EDUC./MULTICATEGORICAL HANDICAPPED/GENERAL SUPP		119.71	
27 E 100 440 158100 341				SPECIAL EDUC./MULTICATEGORICAL HANDICAPPED/NON-CAPITAL		11.96	
			208114567374	LINE MASTER & MARKER HOLDER	4001516014	18.98	
10 E 100 411 110000 000				GENERAL FUND/ELEMENTARY CURRICULUM/GENERAL SUPPLIES		18.98	
			208114579216	SPONGES, CONES, STILTS	5021516027	8.88	
10 E 400 440 121000 000				GENERAL FUND/ART/NON-CAPITAL EQUIPMENT		8.88	
69541	SOCIAL STUDIES SCHOOL SERVICE	07/21/2015	SI54357	ACTIVITY BOOKS, REPRODUCIBLES, DVD'S	5001516017	222.57	407.20
10 E 400 411 127000 000				GENERAL FUND/SOCIAL STUDIES/GENERAL SUPPLIES		161.06	
10 E 400 431 127000 000				GENERAL FUND/SOCIAL STUDIES/AUDIO-VISUAL MEDIA		61.51	
			SI54362	REPRODUCIBLES, CD-ROM, RESOURCE BOOKS	5001516021	184.63	
10 E 400 411 127000 000				GENERAL FUND/SOCIAL STUDIES/GENERAL SUPPLIES		184.63	
69542	SOUTHPAW ENTERPRISES	07/21/2015	0371900-IN	NOT-SO-INFANT SWING & SAFETY ROTATIONAL DEVICE	6001516031	402.42	402.42
27 E 100 440 152000 347				SPECIAL EDUC./EARLY CHILDHOOD/NON-CAPITAL EQUIPMENT		402.42	
69543	TEACHER'S DISCOVERY	07/21/2015	77824	ROMEO & JULIET CLASSICAL COMICS QUICK TEXT & GREAT EXPECTATIONS CLASSICAL COMICS QUICK TEXT	5001516002	77.30	77.30

Check Nbr	Vendor Name	Check Date	Invoice Number	Invoice Desc	PO Number	Invoice Amount	Check Amount
10 E 400 470 122000 000				GENERAL FUND/ENGLISH/TEXTBKS/WORKBKS		77.30	
69544	TREND ENTERPRISES, INC.	07/21/2015	1928759 RI	CONTINETS OF ASIA & EUROPE CHARTS	5011516022	21.89	21.89
10 E 200 431 127000 000				GENERAL FUND/SOCIAL STUDIES/AUDIO-VISUAL MEDIA		21.89	
69545	VERNIER SOFTWARE	07/21/2015	5180393	TEMPERATURE PROBE, PHOTOGATE, ENERGY SENSOR, COLORIMETER	5001516014	327.00	327.00
10 E 400 440 126000 000				GENERAL FUND/SCIENCE/NON-CAPITAL EQUIPMENT		327.00	
69546	WE ENERGIIES	07/21/2015	6/9/15-7/10/15	NEILLSVILLE	0	16.15	16.15
10 E 900 331 253300 000				GENERAL FUND/OPERATION OF BUILDINGS/GAS FOR HEAT		16.15	
69547	WIL-KIL PEST CONTROL CORP	07/21/2015	2718027	HS MONTHLY PET CONTROL	0	38.00	38.00
10 E 800 320 253300 000				GENERAL FUND/OPERATION OF BUILDINGS/PROPERTY SERVICE		38.00	
69548	XCEL ENERGY	07/21/2015	BALL PARK	6/8/15-7/8/15	0	82.24	8,277.20
10 E 800 336 253300 000				GENERAL FUND/OPERATION OF BUILDINGS/ELECTRICITY OTHER T		82.24	
10 E 800 336 253300 000				ELEMENTARY SCHOOL	0	1,117.51	
10 E 800 336 253300 000				GENERAL FUND/OPERATION OF BUILDINGS/ELECTRICITY OTHER T		1,117.51	
10 E 800 336 253300 000				HIGH SCHOOL	0	7,077.45	
10 E 800 336 253300 000				GENERAL FUND/OPERATION OF BUILDINGS/ELECTRICITY OTHER T		7,077.45	

21 Computer Check(s) For a Total of 15,413.56

Check Nbr	Vendor Name	Check Date	Invoice Number	Invoice Desc	PO Number	Invoice Amount	Check Amount
69549	CESA #6	07/24/2015	15999	DPI SUPPLIED PI 1202 GRANT - EDUCATOR EFFECTIVENESS - SYSTEM USERS 2015-2016	0	6,320.00	6,320.00
10 E 800 386 221300 583				GENERAL FUND/INST. STAFF SERV. - TRAINING/PAYMENT TO CE		6,320.00	
69550	COUNTY MARKET - ACTIVITY ACCT	07/24/2015	0169	END OF YEAR ICE CREAM TREATS	0	28.02	28.02
10 L 000 000 811200 000				GENERAL FUND/A/P ACCRUAL		28.02	
69551	CURRICULUM ASSOCIATES INC	07/24/2015	90366044	Quick Word Handbooks	4001516031	42.79	42.79
10 E 100 411 110000 000				GENERAL FUND/ELEMENTARY CURRICULUM/GENERAL SUPPLIES		42.79	
69552	E.O. JOHNSON COMPANY, INC.	07/24/2015	CNIN793096	COPIES	0	830.03	830.03
10 E 800 411 258400 000				GENERAL FUND/COPYING/DUPLICATING/GENERAL SUPPLIES		672.70	
27 E 800 411 223300 341				SPECIAL EDUC./EEN DIRECTOR/GENERAL SUPPLIES		109.65	
27 E 400 411 158100 341				SPECIAL EDUC./MULTICATEGORICAL HANDICAPPED/GENERAL SUPP		47.68	
69553	BRYON GRAUN	07/24/2015	REIMBURSEMENT	SMARTBOARD CONFERENCE HOTEL ROOM	0	123.00	123.00
10 E 200 342 221300 000				GENERAL FUND/INST. STAFF SERV. - TRAINING/EMPLOYEE TRAV		61.50	
10 E 400 342 221300 000				GENERAL FUND/INST. STAFF SERV. - TRAINING/EMPLOYEE TRAV		61.50	
69554	HEIDISONGS	07/24/2015	5134	SING & SPELL THE SIGHT WORDS CD'S	4001516010	37.50	37.50
10 E 100 431 110000 000				GENERAL FUND/ELEMENTARY CURRICULUM/AUDIO-VISUAL MEDIA		37.50	
69555	HOOVER METALS	07/24/2015	24701	HR ROUND & FLAT	0	26.96	35.96
10 L 000 000 811200 000				GENERAL FUND/A/P ACCRUAL		26.96	
			25231	FLAT	0	9.00	
10 L 000 000 811200 000				GENERAL FUND/A/P ACCRUAL		9.00	
69556	LAKESHORE LEARNING MATERIALS	07/24/2015	3004000715	SIGHT WORDS PUZZLE SETS	3001516009	57.49	57.49
10 E 901 411 122000 141				GENERAL FUND/ENGLISH/GENERAL SUPPLIES		57.49	
69557	Vendor Continued Void	07/24/2015					0.00
69558	MARSHFIELD BOOK & STATIONARY	07/24/2015	331879	STAPLES, STAPLER, MARKERS, TAPE DISPENSER, EXPO CLEANER	3001516012	38.63	2,599.85
10 E 100 440 122000 141				GENERAL FUND/ENGLISH/NON-CAPITAL EQUIPMENT		9.44	
10 E 901 411 122000 141				GENERAL FUND/ENGLISH/GENERAL SUPPLIES		29.19	
			331882	FILE FOLDERS,	7001516003	356.62	

Check Nbr	Vendor Name	Check Date	Invoice Number	Invoice Desc	PO Number	Invoice Amount	Check Amount
27 E 050 411 152000 341				TISSUE PAPER, TAPE, PAPER PUNCH, SHEARS SPECIAL EDUC./EARLY CHILDHOOD/GENERAL SUPPLIES		344.14	
27 E 050 440 152000 341				SPECIAL EDUC./EARLY CHILDHOOD/NON-CAPITAL EQUIPMENT		12.48	
			331885	COMPASSES, RULERS (MASKING TAPE)	5011516010	59.10	
10 E 200 440 124000 000				GENERAL FUND/MATHEMATICS/NON-CAPITAL EQUIPMENT		20.80	
10 E 100 411 110000 000				GENERAL FUND/ELEMENTARY CURRICULUM/GENERAL SUPPLIES		38.30	
			331893	BINDER CLIPS, FILE FOLDERS (MARKERS)	5001516001	48.63	
10 E 100 411 110000 000				GENERAL FUND/ELEMENTARY CURRICULUM/GENERAL SUPPLIES		27.72	
10 E 400 411 122000 000				GENERAL FUND/ENGLISH/GENERAL SUPPLIES		20.91	
			331896	4 X 8 WHITE BOARD	5021516046	495.00	
10 E 400 440 136000 000				GENERAL FUND/TECH ED/NON-CAPITAL EQUIPMENT		495.00	
			331908	FLASH CARDS (MARKERS)	4001516021	83.38	
10 E 100 411 110000 000				GENERAL FUND/ELEMENTARY CURRICULUM/GENERAL SUPPLIES		83.38	
			331913	POST-IT FLAGS & NOTES, SHEET PROTECTORS, FILING TABS, CLOTHESPINS, PINS, BAGS	4001516035	53.37	
10 E 100 411 110000 000				GENERAL FUND/ELEMENTARY CURRICULUM/GENERAL SUPPLIES		53.37	
			331927	COLORED COPY PAPERS, SHARPIE MARKERS	0	1,465.12	
10 E 100 411 110000 000				GENERAL FUND/ELEMENTARY CURRICULUM/GENERAL SUPPLIES		1,465.12	
69559 NASCO		07/24/2015	449335	JACQUARD TIE-DYE KITS	7001516004	87.36	624.67
27 E 050 411 152000 341				SPECIAL EDUC./EARLY CHILDHOOD/GENERAL SUPPLIES		87.36	
			449336	Fitness for Life 6th Ed; Health for Life w/Web Resources	5021516053	70.20	
10 E 400 411 141000 000				GENERAL FUND/HEALTH/GENERAL SUPPLIES		70.20	
			449337	Ready-or-Not Tot	5021516053	305.00	
10 E 400 411 141000 000				GENERAL FUND/HEALTH/GENERAL SUPPLIES		305.00	

Check Nbr	Vendor Name	Check Date	Invoice Number	Invoice Desc	PO Number	Invoice Amount	Check Amount
			449338	DVD, RAIN GAUGE, THERMOMETER, COMPASS	5011516016	34.61	
10 E 200 431 126000 000				GENERAL FUND/SCIENCE/AUDIO-VISUAL MEDIA		21.68	
10 E 200 440 126000 000				GENERAL FUND/SCIENCE/NON-CAPITAL EQUIPMENT		12.93	
			449339	Owl Pellets	5011516014	127.50	
10 E 200 411 126000 000				GENERAL FUND/SCIENCE/GENERAL SUPPLIES		127.50	
69560 PRO-ED		07/24/2015	2317537	CONVERSATIONS WITH CONJUNCTIONS	6001516016	78.10	124.30
27 E 800 411 156600 341				SPECIAL EDUC./SPEECH/LANGUAGE/GENERAL SUPPLIES		78.10	
			2317542	PRAC IDEAS ADHD PRESCH - 4; 2E-MANUAL	6001516026	46.20	
27 E 800 439 215000 341				SPECIAL EDUC./PSYCHOLOGICAL SERVICES/OTHER MEDIA		46.20	
69561 QUILL CORPORATION		07/24/2015	5827394	12" X 12" TRIMMER	0	139.99	139.99
10 E 800 440 120000 000				GENERAL FUND/REGULAR CURRICULUM/NON-CAPITAL EQUIPMENT		139.99	
69562 REALLY GOOD STUFF		07/24/2015	5130147	BOOK POUCHES	4001516013	100.75	145.59
10 E 100 411 110000 000				GENERAL FUND/ELEMENTARY CURRICULUM/GENERAL SUPPLIES		100.75	
			5145309	Privacy Shields	4001516027	44.84	
10 E 100 411 110000 000				GENERAL FUND/ELEMENTARY CURRICULUM/GENERAL SUPPLIES		44.84	
69563 SCHOLASTIC INC		07/24/2015	11319843	SRI COLLEGE AND CAREER CLASSROOM EXPANSION PACK	5001516027	499.00	988.68
10 E 400 480 213000 000				GENERAL FUND/PUPIL SERVICES - GUIDANCE/NON-INSTRUCT COM		499.00	
			11365859	Read 180 r-Books	3001516015	489.68	
10 E 200 411 122000 141				GENERAL FUND/ENGLISH/GENERAL SUPPLIES		489.68	
69564 SCHOOLMATE		07/24/2015	IN000420108	2015-16 STUDENT PLANNERS GR. 3 & 4	4001516001	495.00	495.00
10 E 100 411 110000 000				GENERAL FUND/ELEMENTARY CURRICULUM/GENERAL SUPPLIES		495.00	
69565 Vendor Continued Void		07/24/2015					0.00
69566 SCHOOL SPECIALTY		07/24/2015	208114505149	WATERCOLOR REFILLS, PENCIL COLORS, CRAYONS, MARKERS	4001516004	137.79	2,150.85
10 E 100 411 121000 000				GENERAL FUND/ART/GENERAL SUPPLIES		137.79	
			208114505155	PENCILS, COLORED PENCILS, ERASERS, TEMPLATES,	5021516030	274.44	

Check Nbr	Vendor Name	Check Date	Invoice Number	Invoice Desc	PO Number	Invoice Amount	Check Amount
				MARKERS			
10 E 400 411 121000 000				GENERAL FUND/ART/GENERAL SUPPLIES		257.79	
10 E 400 431 121000 000				GENERAL FUND/ART/AUDIO-VISUAL MEDIA		16.65	
			208114505156	CANVAS PANELS, DRAWING PAPER	5021516003	275.79	
10 E 200 411 121000 000				GENERAL FUND/ART/GENERAL SUPPLIES		275.79	
			208114505160	DRAWING PAPER	5001516020	96.03	
10 E 100 411 110000 000				GENERAL FUND/ELEMENTARY CURRICULUM/GENERAL SUPPLIES		49.12	
10 E 400 411 127000 000				GENERAL FUND/SOCIAL STUDIES/GENERAL SUPPLIES		46.91	
			308102221385	ERASERS, DRAFTING DOTS, HACKSAW BLADES, PENETRANTS, HOSE CLAMP, PUNCH & CHISEL SET, GLOVES	5021516049	444.66	
10 E 400 411 136000 000				GENERAL FUND/TECH ED/GENERAL SUPPLIES		141.60	
10 E 400 440 136000 000				GENERAL FUND/TECH ED/NON-CAPITAL EQUIPMENT		303.06	
			308102222715	PENCILS, SCISSORS, TAPE DISPENSER, GLUE STICKS, CONSTRUCTION PAPER, COLORED PENCILS, MARKERS, TAG BOARD, WHITEBOARD	5021516038	399.60	
10 E 400 411 135000 000				GENERAL FUND/FAMILY & CONSUMER EC/GENERAL SUPPLIES		82.47	
10 E 400 440 135000 000				GENERAL FUND/FAMILY & CONSUMER EC/NON-CAPITAL EQUIPMENT		317.13	
			308102225724	ACRYLIC PAINTS	5021516005	522.54	
10 E 200 411 121000 000				GENERAL FUND/ART/GENERAL SUPPLIES		522.54	
69567 TDS TELECOM		07/24/2015	7/22/15-8/21/15	NEILLSVILLE	0	108.62	108.62
10 E 900 355 263300 000				GENERAL FUND/PUBLIC INFORMATION/TELEPHONE		108.62	
69568 WEA INSURANCE		07/24/2015	533809	7/1/15-7/31/15	0	1,817.88	1,817.88
10 L 000 000 811200 000				GENERAL FUND/A/P ACCRUAL		522.15	
27 L 000 000 811200 000				SPECIAL EDUC./A/P ACCRUAL		109.57	
50 L 000 000 811200 000				FOOD SERVICE FUND/A/P ACCRUAL		1,186.16	
69569 WE ENGERGIES		07/24/2015	ADAMS ST	6/15/15-7/16/15	0	13.65	869.63
10 E 800 331 253300 000				GENERAL FUND/OPERATION OF BUILDINGS/GAS FOR HEAT		13.65	
				ELEMENTARY SCHOOL	6/15/15-7/16/15	42.52	
10 E 800 331 253300 000				GENERAL FUND/OPERATION OF BUILDINGS/GAS FOR HEAT		42.52	

Check Nbr	Vendor Name	Check Date	Invoice Number	Invoice Desc	PO Number	Invoice Amount	Check Amount			
10 E 800 331 253300 000			GREENHOUSE	6/15/15-7/16/15	0	46.05				
			GENERAL FUND/OPERATION OF BUILDINGS/GAS FOR HEAT			46.05				
10 E 800 331 253300 000			HIGH SCHOOL BACK	6/15/15-7/16/15	0	241.58				
			GENERAL FUND/OPERATION OF BUILDINGS/GAS FOR HEAT			241.58				
10 E 800 331 253300 000			HIGH SCHOOL FRONT	6/15/15-7/16/15	0	476.10				
			GENERAL FUND/OPERATION OF BUILDINGS/GAS FOR HEAT			476.10				
10 E 800 331 253300 000			MIDDLE SCHOOL	6/15/15-7/16/15	0	23.38				
			GENERAL FUND/OPERATION OF BUILDINGS/GAS FOR HEAT			23.38				
10 E 800 331 253300 000			SPENCE ST	6/15/15-7/16/15	0	26.35				
			GENERAL FUND/OPERATION OF BUILDINGS/GAS FOR HEAT			26.35				
69570 WIL-KIL PEST CONTROL CORP		07/24/2015	2730709	WEED WORK	0	700.75	738.75			
10 E 800 320 253300 000			GENERAL FUND/OPERATION OF BUILDINGS/PROPERTY SERVICE			700.75				
10 E 800 320 253300 000			2730878	RATS/MICE	0	38.00				
			GENERAL FUND/OPERATION OF BUILDINGS/PROPERTY SERVICE			38.00				
69571 XCEL ENERGY		07/24/2015	6/15/15-7/14/15	AUTO PROTECTIVE LIGHTING	0	46.72	46.72			
10 E 800 336 253300 000			GENERAL FUND/OPERATION OF BUILDINGS/ELECTRICITY OTHER T			46.72				
							23	Computer	Check(s) For a Total of	18,325.32

Check Nbr	Vendor Name	Check Date	Invoice Number	Invoice Desc	PO Number	Invoice Amount	Check Amount
69572	CONSTRUCTIVE PLAYTHINGS	07/27/2015	5142454400	SCIENCE GAMES, TEMPERA PAINT, CRAFT STICKS	4001516015	105.19	105.19
10 E 100 411 110000 000			GENERAL FUND/ELEMENTARY	CURRICULUM/GENERAL SUPPLIES		105.19	
69573	EAI EDUATION	07/27/2015	INV0727395	CLEANWIPE CLOTHS, CUBES, DOMINOES, NUMBER LINE FLOOR MAT, CALCULATOR	3001516002	92.14	328.85
10 E 100 411 122000 141			GENERAL FUND/ENGLISH/GENERAL SUPPLIES			83.56	
10 E 100 440 122000 141			GENERAL FUND/ENGLISH/NON-CAPITAL EQUIPMENT			8.58	
			INV0727579	Math Manipulatives	5011516012	236.71	
10 E 200 411 124000 000			GENERAL FUND/MATHEMATICS/GENERAL SUPPLIES			204.52	
10 E 200 440 124000 000			GENERAL FUND/MATHEMATICS/NON-CAPITAL EQUIPMENT			32.19	
69574	FIRST TECHNOLOGIES INC	07/27/2015	53236206	AFINIA 3D NOZZLE & ABS FILAMENTS	5021516044	325.95	325.95
10 E 400 411 136000 000			GENERAL FUND/TECH ED/GENERAL SUPPLIES			325.95	
69575	JIM HAGEN	07/27/2015	REIMBURSEMENT	CERTIFICATE FRAMES	0	50.00	50.00
10 E 800 411 162001 000			GENERAL FUND/ATHLETICS-GENERAL/GENERAL SUPPLIES			50.00	
69576	HEINEMANN	07/27/2015	6492424	GR 2 BLUE LEVEL TAKE HOME BOOKS	3001516008	171.60	171.60
10 E 100 411 122000 141			GENERAL FUND/ENGLISH/GENERAL SUPPLIES			171.60	
69577	HOUGHTON MIFFLIN HARCOURT PUBL	07/27/2015	951530862	World Cultures and Geography 2007 Social Studies Books	5011516018	1,279.65	1,279.65
10 E 200 470 127000 000			GENERAL FUND/SOCIAL STUDIES/TEXTBKS/WORKBKS			1,279.65	
69578	Vendor Continued Void	07/27/2015					0.00
69579	LAKESHORE LEARNING MATERIALS	07/27/2015	3003970715	Privacy partitions.	4001516028	64.38	3,056.28
10 E 100 411 110000 000			GENERAL FUND/ELEMENTARY CURRICULUM/GENERAL SUPPLIES			64.38	
			3003980715	GEOMETRIC SHAPES, MAGNIFIERS, EYE DROPPERS, MAGNETIC KIT, MAGNETIC CARS, MAGNETIC LIVING THINGS	4001516008	974.99	
10 E 100 411 110000 000			GENERAL FUND/ELEMENTARY CURRICULUM/GENERAL SUPPLIES			745.01	
10 E 100 440 110000 000			GENERAL FUND/ELEMENTARY CURRICULUM/NON-CAPITAL EQUIPMEN			229.98	

Check Nbr	Vendor Name	Check Date	Invoice Number	Invoice Desc	PO Number	Invoice Amount	Check Amount
			3003990715	MEASUREMENT CENTERS SET, POP & MATCH BEGINNING PHONICS GAMES	4001516016	228.85	
10 E 100 411 110000 000				GENERAL FUND/ELEMENTARY CURRICULUM/GENERAL SUPPLIES		228.85	
			3004010715	EASELS, VIEW MASTERS, SOUNDS TEACHING TUBS	6001516008	1,128.13	
27 E 100 411 152000 347				SPECIAL EDUC./EARLY CHILDHOOD/GENERAL SUPPLIES		210.43	
27 E 100 440 152000 347				SPECIAL EDUC./EARLY CHILDHOOD/NON-CAPITAL EQUIPMENT		917.70	
			3004030715	BRUSH TOP BOTTLES	6001516003	59.75	
27 E 050 411 152000 341				SPECIAL EDUC./EARLY CHILDHOOD/GENERAL SUPPLIES		59.75	
			3004050715	INK PAD SET, WIGGLY EYES, BOOK & CD SET, PRIVACY PARTITIONS, MAGNA TILES	4001516011	513.98	
10 E 100 411 110000 000				GENERAL FUND/ELEMENTARY CURRICULUM/GENERAL SUPPLIES		513.98	
			3004070715	JUNCTION BOX, INK PAD SET, DOT ART PAINTERS, ERASERS	4001516018	86.20	
10 E 100 411 110000 000				GENERAL FUND/ELEMENTARY CURRICULUM/GENERAL SUPPLIES		66.66	
10 E 100 440 110000 000				GENERAL FUND/ELEMENTARY CURRICULUM/NON-CAPITAL EQUIPMEN		19.54	
69580	Vendor Continued Void	07/27/2015					0.00
69581	Vendor Continued Void	07/27/2015					0.00
69582	MARSHFIELD BOOK & STATIONARY	07/27/2015	331880	MAGNETIC HOOKS, ERASABLE PUZZLES, CHART, WRITING PAPER, CHART TABLET, ERASERS, MARKERS, FOLDERS, POST-ITS	3001516010	84.64	2,080.19
10 E 100 411 122000 141				GENERAL FUND/ENGLISH/GENERAL SUPPLIES		82.75	
10 E 100 440 122000 141				GENERAL FUND/ENGLISH/NON-CAPITAL EQUIPMENT		0.00	
10 E 100 431 122000 141				GENERAL FUND/ENGLISH/AUDIO-VISUAL MEDIA		1.89	
			331884	POST-ITS, CONSTRUCTION PAPER, GLUE STICKS	5011516008	81.10	
10 E 200 411 122000 000				GENERAL FUND/ENGLISH/GENERAL SUPPLIES		81.10	
			331886	11" x 17" WHITE COPY PAPER	5021516007	214.32	
10 E 200 411 125400 000				GENERAL FUND/VOCAL MUSIC/GENERAL SUPPLIES		214.32	

Check Nbr	Vendor Name	Check Date	Invoice Number	Invoice Desc	PO Number	Invoice Amount	Check Amount
			331887	GLUE STICKS (MASKING TAPE)	5021516008	19.15	
10 E 100 411 110000 000				GENERAL FUND/ELEMENTARY CURRICULUM/GENERAL SUPPLIES		19.15	
			331890	TAPE, GLUE, CALENDAR, LEGAL PADS, ERASERS, PENS, STAPLES, MARKERS, TISSUE PAPERS, WIGGLY EYES, STICKERS, PENCIL SHARPENER	6001516037	249.95	
27 E 100 411 158100 341				SPECIAL EDUC./MULTICATEGORICAL HANDICAPPED/GENERAL SUPP		241.86	
27 E 100 440 158100 341				SPECIAL EDUC./MULTICATEGORICAL HANDICAPPED/NON-CAPITAL		8.09	
			331902	PAINT PAN REFILLS, CRAYONS, CONSTRUCTION PAPER, ERASERS, MARKERS, PAINTS, CLAY, PASTELS, SCHOOL GLUE	4001516003	924.94	
10 E 100 411 121000 000				GENERAL FUND/ART/GENERAL SUPPLIES		924.94	
			331903	PLAY MONEY, HOLE PUNCH, TEMPERA PAINTS, MARKERS, SENTENCE STRIPS, LOOSE LEAF RINGS, PENS, CRAFT STICKS, , GLITTER, BIRTHDAY CROWNS, BB SET, BORDERS, STICKERS	4001516012	259.88	
10 E 100 411 110000 000				GENERAL FUND/ELEMENTARY CURRICULUM/GENERAL SUPPLIES		249.86	
10 E 100 440 110000 000				GENERAL FUND/ELEMENTARY CURRICULUM/NON-CAPITAL EQUIPMEN		10.02	
			331904	FLASH CARDS, SENTENCE STRIPS, CHART TABLET, CORRECTION TAPES, POCKET FOLDERS	4001516019	23.95	
10 E 100 411 110000 000				GENERAL FUND/ELEMENTARY CURRICULUM/GENERAL SUPPLIES		23.95	
			331909	CHAIRBACK BUDDIES, MOUNTING TABS, FOLDER HOLDERS, BAGS, INDEX CARDS	4001516026	132.27	

Check Nbr	Vendor Name	Check Date	Invoice Number	Invoice Desc	PO Number	Invoice Amount	Check Amount
10 E 100 411 110000 000				GENERAL FUND/ELEMENTARY CURRICULUM/GENERAL SUPPLIES		132.27	
			331912	BRASS FASTENERS, BOOK POCKETS, NEON PAPER, RAILROAD BOARD, TAG BOARD, TIMER	4001516034	89.99	
10 E 100 411 110000 000				GENERAL FUND/ELEMENTARY CURRICULUM/GENERAL SUPPLIES		74.81	
10 E 100 440 110000 000				GENERAL FUND/ELEMENTARY CURRICULUM/NON-CAPITAL EQUIPMEN		15.18	
69583	MCGRAW HILL HOLDINGS LLC	07/27/2015	86867521001	AP PSYCHOLOGY STUDENT EDITIONS	5001516023	1,792.09	1,792.09
10 E 400 470 127000 000				GENERAL FUND/SOCIAL STUDIES/TEXTBKS/WORKBKS		1,792.09	
69584	PBS DISTRIBUTION LLC	07/27/2015	800134739	DVD SET: THE SIXTIES	5001516016	55.94	55.94
10 E 400 431 127000 000				GENERAL FUND/SOCIAL STUDIES/AUDIO-VISUAL MEDIA		55.94	
69585	QUILL CORPORATION	07/27/2015	6055557	ZIPLOC BAGS	0	6.98	6.98
10 E 800 411 253300 000				GENERAL FUND/OPERATION OF BUILDINGS/GENERAL SUPPLIES		6.98	
69586	REALLY GOOD STUFF	07/27/2015	5145308	BIRTHDAY CROWNS, HAPPY BIRTHDAY PENCILS, DESKTOP NUMBER GRID	4001516024	235.57	235.57
10 E 100 411 110000 000				GENERAL FUND/ELEMENTARY CURRICULUM/GENERAL SUPPLIES		235.57	
69587	SCHOOL SPECIALTY	07/27/2015	308102227748	PACK OF CLIPS & PINS, POCKET CHART STORAGE, POSTER STRIPS, ADHESIVE STRIPS, PENCILS, MARKERS	6001516042	140.71	140.71
27 E 200 411 158100 341				SPECIAL EDUC./MULTICATEGORICAL HANDICAPPED/GENERAL SUPP		140.71	
69588	SUPER DUPER	07/27/2015	2082315A	VOCABULARY TEST KITS, SOUND FLIP BOOKS, PHONOLOGY CARDS, ELE PHONES, MAGNE TALK ADVENTURE KIT, TOKEN TOWER, CONCEPTS MAGNETS, LANGUAGE LAV	6001516018	1,314.56	1,314.56
27 E 800 411 156600 341				SPECIAL EDUC./SPEECH/LANGUAGE/GENERAL SUPPLIES		1,314.56	
69589	VERIZON WIRELESS	07/27/2015	9749095992	WIRELESS/MIFIS	0	192.95	192.95
10 E 800 355 263300 000				GENERAL FUND/PUBLIC INFORMATION/TELEPHONE		192.95	
69590	WARD'S SCIENCE	07/27/2015	8041811583	TEST/TASTE	5001516008	542.00	702.50

Check Nbr	Vendor Name	Check Date	Invoice Number	Invoice Desc	PO Number	Invoice Amount	Check Amount
10 E 400 411 126000 000				PAPERS, LAB ACTIVITY, SLIDES, PRESERVED SPECIMANS GENERAL FUND/SCIENCE/GENERAL SUPPLIES		542.00	
10 E 400 411 126000 000			8041842858	GLUCOSE GENERAL FUND/SCIENCE/GENERAL SUPPLIES	5001516008	5.61	5.61
10 E 400 440 126000 000			8041858776	BUNSEN BURNERS GENERAL FUND/SCIENCE/NON-CAPITAL EQUIPMENT	5001516008	149.28	149.28
10 E 400 411 126000 000			8041872965	GLUCOSE GENERAL FUND/SCIENCE/GENERAL SUPPLIES	5001516008	5.61	5.61

19 Computer Check(s) For a Total of 11,839.01

Check Nbr	Vendor Name	Check Date	Invoice Number	Invoice Desc	PO Number	Invoice Amount	Check Amount
69591	AMERICAN RED CROSS - HEALTH/SA	07/28/2015	LIFEGUARDING	10 STUDENTS	0	350.00	350.00
10 E 800 940 253300 000			GENERAL FUND/OPERATION OF BUILDINGS/DUES & FEES			350.00	
69592	INTERNAL REVENUE SERVICE	07/28/2015	2015	QUARTERLY FEDERAL	0	216.32	216.32
10 E 800 940 239000 000			GENERAL FUND/OTHER ADMINISTRATION/DUES & FEES			216.32	
69593	SCHOLASTIC INC	07/28/2015	11382171	Map Skills	5011516020	404.66	404.66
10 E 200 470 127000 000			GENERAL FUND/SOCIAL STUDIES/TEXTBKS/WORKBKS	Booklets		404.66	
69594	XCEL ENERGY	07/28/2015	6/17/15-7/19/15	NEILLSVILLE	0	700.42	700.42
10 E 900 336 253300 000			GENERAL FUND/OPERATION OF BUILDINGS/ELECTRICITY OTHER T			700.42	
			4	Computer	Check(s) For a Total of		1,671.40

Check Nbr	Vendor Name	Check Date	Invoice Number	Invoice Desc	PO Number	Invoice Amount	Check Amount
69595	CESA #6	07/30/2015	16362	CMS4Schools 2015-2016 Annual Fee & Additional Storage	0	2,010.00	2,010.00
10 E 800 386 266000 000				GENERAL FUND/TECHNOLOGY COORD/PROJECTS/PAYMENT TO CESA		2,010.00	
69596	CHARTER COMMUNICATIONS	07/30/2015	OPTICAL ETHR INTRA	8/1/15-8/31/15	0	727.28	727.28
10 E 800 358 266000 000				GENERAL FUND/TECHNOLOGY COORD/PROJECTS/ON-LINE COMMUNIC		727.28	
69597	HEINEMANN	07/30/2015	6492420	KDGN ORANGE LEVEL TAKE HOME BOOKS	3001516006	140.80	140.80
10 E 901 411 122000 141				GENERAL FUND/ENGLISH/GENERAL SUPPLIES		140.80	
69598	HOUGHTON MIFFLIN HARCOURT PUBL	07/30/2015	951526759	LEVEL 1 SPANISH TEXTBOOKS AND TEACHER MATERIALS	5021516059	11,929.50	11,929.50
10 E 800 470 123000 000				GENERAL FUND/FOREIGN LANGUAGE/TEXTBKS/WORKBKS		11,929.50	
69599	Vendor Continued Void	07/30/2015					0.00
69600	MARSHFIELD BOOK & STATIONARY	07/30/2015	331881	TAPE MEASURES, FILE FOLDERS, EXPO MARKERS, PENCILS, ERASERS, FLASH CARDS, POST-ITS, BINDERS, BB SET	3001516004	89.98	2,858.08
10 E 100 411 122000 141				GENERAL FUND/ENGLISH/GENERAL SUPPLIES		83.15	
10 E 100 440 122000 141				GENERAL FUND/ENGLISH/NON-CAPITAL EQUIPMENT		6.83	
			331883	POST-ITS, SHARPIES, BOOKMARKS, CHARTLET, HOOKS	5011516004	84.98	
10 E 200 411 122000 000				GENERAL FUND/ENGLISH/GENERAL SUPPLIES		84.98	
			331888	SPECIAL COLORED COPY PAPERS (MASKING TAPE)	6011516001	47.80	
10 E 200 411 127000 000				GENERAL FUND/SOCIAL STUDIES/GENERAL SUPPLIES		19.15	
10 E 100 411 110000 000				GENERAL FUND/ELEMENTARY CURRICULUM/GENERAL SUPPLIES		28.65	
			331889	PENCIL SHARPENER, FILE FOLDER LABELS, LAMINATOR POUCHES, TABLE	6001516020	49.53	
27 E 800 411 156600 341				SPECIAL EDUC./SPEECH/LANGUAGE/GENERAL SUPPLIES		27.68	
27 E 800 440 156600 341				SPECIAL EDUC./SPEECH/LANGUAGE/NON-CAPITAL EQUIPMENT		21.85	
			331891	HS & MS BUILDING WIDE SUPPLIES	5021516002	524.66	

Check Nbr	Vendor Name	Check Date	Invoice Number	Invoice Desc	PO Number	Invoice Amount	Check Amount
10 E 800 411 120000 000				GENERAL FUND/REGULAR CURRICULUM/GENERAL SUPPLIES		524.66	
			331892	HS & MS BUILDING WIDE SUPPLIES	5021516021	1,768.34	
10 E 800 411 120000 000				GENERAL FUND/REGULAR CURRICULUM/GENERAL SUPPLIES		1,768.34	
			331894	PENCIL COLORS, MARKERS, TAGBOARD, GLUE STICKS	5001516007	107.75	
10 E 400 411 126000 000				GENERAL FUND/SCIENCE/GENERAL SUPPLIES		107.75	
			331895	GLUE STICKS, MARKERS, FILE FOLDERS, SCISSORS, RAIL ROAD BOARD	5021516052	115.63	
10 E 400 411 141000 000				GENERAL FUND/HEALTH/GENERAL SUPPLIES		98.61	
10 E 400 440 141000 000				GENERAL FUND/HEALTH/NON-CAPITAL EQUIPMENT		17.02	
			331911	TRIMMERS, TAPES, WITE-OUT, ERASERS, POST-IT FLAGS, RULERS	4001516032	69.41	
10 E 100 411 110000 000				GENERAL FUND/ELEMENTARY CURRICULUM/GENERAL SUPPLIES		63.12	
10 E 100 440 110000 000				GENERAL FUND/ELEMENTARY CURRICULUM/NON-CAPITAL EQUIPMEN		6.29	
69601	Vendor Continued Void	07/30/2015					0.00
69602	MCGRAW HILL HOLDINGS LLC	07/30/2015	86833778001	Glencoe Math Gr. 7 & 8, Accelerated Math, Algebra	5011516023	14,861.52	22,380.29
10 E 200 470 124000 000				GENERAL FUND/MATHEMATICS/TEXTBKS/WORKBKS		14,861.52	
			86867800002	Reading Mastery student workbooks	6001516035	784.88	
27 E 100 470 158100 341				SPECIAL EDUC./MULTICATEGORICAL HANDICAPPED/TEXTBKS/WORK		784.88	
			86867800003	EVERYDAY MATH JOURNALS GRADE 1	4001516022	1,100.60	
10 E 100 470 110000 000				GENERAL FUND/ELEMENTARY CURRICULUM/TEXTBKS/WORKBKS		1,100.60	
			86867800004	EVERYDAY MATH STUDENT JOURNALS GRADE 5, GEOMETRY TEMPLATES	5011516003	1,570.65	
10 E 200 411 120000 000				GENERAL FUND/REGULAR CURRICULUM/GENERAL SUPPLIES		208.79	
10 E 200 470 120000 000				GENERAL FUND/REGULAR CURRICULUM/TEXTBKS/WORKBKS		1,361.86	
			86867800005	READING MASTERY &	6001516038	532.69	

Check Nbr	Vendor Name	Check Date	Invoice Number	Invoice Desc	PO Number	Invoice Amount	Check Amount
27 E 100 470 158100 341				CONNECTING MATH WORKBOOKS		532.69	
				SPECIAL EDUC./MULTICATEGORICAL HANDICAPPED/TEXTBKS/WORK			
			86867800006	EVERYDAY MATH JOURNALS GR. 2	4001516029	1,550.00	
10 E 100 470 110000 000				GENERAL FUND/ELEMENTARY CURRICULUM/TEXTBKS/WORKBKS		1,550.00	
			86889035001	EVERYDAY MATH JOURNALS, TEMPLATES	5011516011	1,691.46	
10 E 200 435 124000 000				GENERAL FUND/MATHEMATICS/PROGRAMMED COMPUTER SOFTWARE		0.00	
10 E 200 440 124000 000				GENERAL FUND/MATHEMATICS/NON-CAPITAL EQUIPMENT		210.48	
10 E 200 470 124000 000				GENERAL FUND/MATHEMATICS/TEXTBKS/WORKBKS		1,480.98	
			86891961001	eSUITE	5011516011	249.00	
10 E 200 435 124000 000				GENERAL FUND/MATHEMATICS/PROGRAMMED COMPUTER SOFTWARE		249.00	
			86941502001	CONNECTING MATH WORKBOOKS	6001516038	39.49	
27 E 100 470 158100 341				SPECIAL EDUC./MULTICATEGORICAL HANDICAPPED/TEXTBKS/WORK		39.49	
69603 MIDWEST TECHNOLOGY		07/30/2015	2067425-00	SANDING DISKS, DRILL BITS, SAW BLADES, SAND PAPER	5021516040	482.20	482.20
10 E 400 411 136000 000				GENERAL FUND/TECH ED/GENERAL SUPPLIES		482.20	
69604 NASCO		07/30/2015	471789	CLASSIC READ ALONGS SET (BOOKS & CD)	6001516049	183.18	183.18
27 E 400 411 158100 341				SPECIAL EDUC./MULTICATEGORICAL HANDICAPPED/GENERAL SUPP		183.18	
69605 PENN TOOL CO.		07/30/2015	319884	BITS, PUNCH SET, PLIERS, CLAMPS, CRESCENT WRENCH, CARBIDE INSERTS, BLADES,	5021516048	1,187.16	1,187.16
10 E 400 411 136000 000				GENERAL FUND/TECH ED/GENERAL SUPPLIES		183.57	
10 E 400 440 136000 000				GENERAL FUND/TECH ED/NON-CAPITAL EQUIPMENT		1,003.59	
69606 PRO-ED		07/30/2015	2317512	CARS-2_manual	6001516024	92.40	1,318.90
27 E 800 439 215000 341				SPECIAL EDUC./PSYCHOLOGICAL SERVICES/OTHER MEDIA		92.40	
			2317540	ABAS 3 COMPREHENSIVE KIT, ABAS PARENT & TEACHER FORMS	6001516023	660.00	
27 E 800 411 215000 341				SPECIAL EDUC./PSYCHOLOGICAL SERVICES/GENERAL SUPPLIES		660.00	

Check Nbr	Vendor Name	Check Date	Invoice Number	Invoice Desc	PO Number	Invoice Amount	Check Amount
			2317545	TESTS OF EARLY LANGUAGE DEVELOPMENT	6001516013	566.50	
27 E 800 411 156600 341				SPECIAL EDUC./SPEECH/LANGUAGE/GENERAL SUPPLIES		566.50	
69607	QUILL CORPORATION	07/30/2015	6085626	BOX TAPE	0	26.58	26.58
10 E 800 411 232100 000				GENERAL FUND/OFFICE OF SUPERINTENDENT/GENERAL SUPPLIES		26.58	
69608	SCHOOL SPECIALTY	07/30/2015	208114511469	GLAZES	5021516006	1,306.72	1,306.72
10 E 200 411 121000 000				GENERAL FUND/ART/GENERAL SUPPLIES		1,306.72	
69609	SEARS COMMERCIAL ONE	07/30/2015	STATEMENT	8 Craftsman 19.2 Volt C3 Replacement Batteries	5021516042	251.68	251.68
10 E 400 411 136000 000				GENERAL FUND/TECH ED/GENERAL SUPPLIES		251.68	
69610	SOLUTION TREE LLC	07/30/2015	842374	RESOURCE BOOK: IN PRIASE OF AMERICAN EDUCATORS	1011516009	163.75	163.75
10 E 800 439 232100 000				GENERAL FUND/OFFICE OF SUPERINTENDENT/OTHER MEDIA		163.75	
69611	TEACHER CREATED RESOURCES	07/30/2015	5831293	BOOKS, BB PACK, NAME PLATES, BORDERS, ACCENTS, CHART	4001516040	168.56	168.56
10 E 100 411 110000 000				GENERAL FUND/ELEMENTARY CURRICULUM/GENERAL SUPPLIES		168.56	
69612	WELDERS SUPPLY	07/30/2015	02307881	PLASMA CUTTER	5021516058	1,624.00	1,624.00
10 E 400 440 136000 000				GENERAL FUND/TECH ED/NON-CAPITAL EQUIPMENT		1,624.00	
69613	WESTERN PSYCHOLOGICAL SERVICES	07/30/2015	WPS-093269	Test Booklets: PDMS-2 EXAMINER RECORD BOOKLET	6001516027	97.90	273.90
27 E 800 411 218100 341				SPECIAL EDUC./OCCUPATIONAL THERAPY/GENERAL SUPPLIES		97.90	
			WPS-093575	TEST OF HANDWRITING SKILLS	6001516028	176.00	
27 E 800 411 218100 341				SPECIAL EDUC./OCCUPATIONAL THERAPY/GENERAL SUPPLIES		176.00	
69614	WIESER EDUCATIONAL	07/30/2015	70457	Graphic U.S. History Sets	5021516024	269.50	269.50
10 E 800 470 120000 000				GENERAL FUND/REGULAR CURRICULUM/TEXTBKS/WORKBKS		269.50	
69615	YOUTH LIGHT INC	07/30/2015	1075570	PBIS SOCIAL SKILLS GROUP AND CLASSROOM LESSON	4001516041	51.80	51.80
10 E 100 411 213000 000				GENERAL FUND/PUPIL SERVICES - GUIDANCE/GENERAL SUPPLIES		28.84	

Check Nbr	Vendor Name	Check Date	Invoice Number	Invoice Desc	PO Number	Invoice Amount	Check Amount
10 E 100 439 213000 000				GENERAL FUND/PUPIL SERVICES - GUIDANCE/OTHER MEDIA		22.96	
				21 Computer	Check(s) For a Total of		47,353.88

Check Nbr	Vendor Name	Check Date	Invoice Number	Invoice Desc	PO Number	Invoice Amount	Check Amount		
69616	CHARTER COMMUNICATIONS	08/04/2015	8/8/15-9/7/15	ACCOUNT #8245 11 261 0013295	0	36.76	36.76		
10 E 800 358 266000 000				GENERAL FUND/TECHNOLOGY COORD/PROJECTS/ON-LINE COMMUNIC		36.76			
69617	POSTMASTER	08/04/2015	BULK MAILING	BACK-TO-SCHOOL	0	290.55	290.55		
10 E 800 353 263300 000				GENERAL FUND/PUBLIC INFORMATION/POSTAGE		290.55			
69618	POSTMASTER	08/04/2015	PO BOX FEE	LITTLE STARS PRESCHOOL PO BOX #140	0	114.00	114.00		
10 E 800 571 263300 000				GENERAL FUND/PUBLIC INFORMATION/EQUIPMENT RENTAL		114.00			
69619	DELTA DENTAL OF WISCONSIN	08/04/2015	817909	AUGUST 2015	0	9,117.41	9,117.41		
10 L 000 000 811632 000				GENERAL FUND/DENTAL INS.		9,117.41			
69620	MICHAEL JOHNSON	08/04/2015	MEDICAL		0	297.98	297.98		
10 E 800 290 292000 000				GENERAL FUND/CESA GEN. ADMINISTRATION/OTHER EMPLOYEE BE		297.98			
69621	TP PRINTING CO INC	08/04/2015	JULY 2015	HELP WANTED ADS	0	2,093.00	2,093.00		
10 E 800 354 263300 000				GENERAL FUND/PUBLIC INFORMATION/PRINTING & BINDING		2,093.00			
69622	LISA UNDERWOOD	08/04/2015	REIMBURSEMENT	SCHOOL SUPPLIES (ROBIDA FAMILY DONATION)	0	85.51	85.51		
10 E 100 411 110000 000				GENERAL FUND/ELEMENTARY CURRICULUM/GENERAL SUPPLIES		85.51			
						7	Computer	Check(s) For a Total of	12,035.21

Check Nbr	Vendor Name	Check Date	Invoice Number	Invoice Desc	PO Number	Invoice Amount	Check Amount
69623	ADVANCED HEATING AND COOLING	08/05/2015	5302	CDEC A/C SERVICED	0	154.00	154.00
10 E 800 320 254300 000				GENERAL FUND/MAINTENANCE-BUILDINGS/PROPERTY SERVICE		154.00	
69624	PARCHMENT INC	08/05/2015	54675	ANNUAL PARCHMENT	0	500.00	500.00
10 E 400 310 213000 000				SENDER SERVICE - K-12-RENEWAL 7/19/15-7/18/16 GENERAL FUND/PUPIL SERVICES - GUIDANCE/PERSONAL SERVICE		500.00	
69625	Vendor Continued Void	08/05/2015					0.00
69626	RCU CARDHOLDER SERVICES	08/05/2015	24164075182105300548	BATTERIES &	2001516015	179.94	1,335.22
10 E 200 411 222200 000				LAMINATING FILM GENERAL FUND/LMC - INST SERVICE/GENERAL SUPPLIES		179.94	
10 E 400 411 222200 000			24164075182105300553	BATTERIES, FLASHDRIVES, LAMINATING FILM GENERAL FUND/LMC - INST SERVICE/GENERAL SUPPLIES	2001516024	207.91	
10 E 100 411 222200 000			24164075182105330515	BATTERIES & BOOM BOXES GENERAL FUND/LMC - INST SERVICE/GENERAL SUPPLIES	2001516008	171.14	
10 E 100 440 222200 000				GENERAL FUND/LMC - INST SERVICE/GENERAL SUPPLIES		63.96	
10 E 800 431 120000 000			24692165177000926	AMERICAN MORE! LEVEL 1 CLASS AUDIO CDS GENERAL FUND/REGULAR CURRICULUM/AUDIO-VISUAL MEDIA	5021516022	33.83	
10 E 400 434 222200 000			2469216518000034090.	HS LMC - Successful Farming Magazine Subscription GENERAL FUND/LMC - INST SERVICE/PERIODICALS	2001516039	15.95	
10 E 200 434 222200 000			24692165180000340907	MS LMC - Successful Farming Magazine Subscription GENERAL FUND/LMC - INST SERVICE/PERIODICALS	2001516038	15.95	
10 E 400 440 126000 000			24692165180000400537	OHAUS ELECTRONIC BALANCE GENERAL FUND/SCIENCE/NON-CAPITAL EQUIPMENT	5001516009	275.00	
10 E 800 440 120000 000			24692165180000400883	WHITEBOARD & CALCULATORS GENERAL FUND/REGULAR CURRICULUM/NON-CAPITAL EQUIPMENT	5021516023	45.07	
			24692165180000417022	Ear Thermometer GENERAL FUND/REGULAR CURRICULUM/NON-CAPITAL EQUIPMENT	4001516006	51.60	

Check Nbr	Vendor Name	Check Date	Invoice Number	Invoice Desc	PO Number	Invoice Amount	Check Amount
				Covers			
10 E 800 411 253300 000				GENERAL FUND/OPERATION OF BUILDINGS/GENERAL SUPPLIES		51.60	
			24692165180000419678	CONVERTER, CABLES, DVD-VHS PLAYER	2001516011	355.45	
10 E 100 440 222200 000				GENERAL FUND/LMC - INST SERVICE/NON-CAPITAL EQUIPMENT		244.09	
10 E 400 440 222200 000				GENERAL FUND/LMC - INST SERVICE/NON-CAPITAL EQUIPMENT		111.36	
			24692165181000865447	AMERICAN MORE! MATERIALS (BOOKS, CD-RM, AUDIO CD'S)	5021516022	183.36	
10 E 800 411 120000 000				GENERAL FUND/REGULAR CURRICULUM/GENERAL SUPPLIES		41.11	
10 E 800 431 120000 000				GENERAL FUND/REGULAR CURRICULUM/AUDIO-VISUAL MEDIA		22.68	
10 E 800 439 120000 000				GENERAL FUND/REGULAR CURRICULUM/OTHER MEDIA		119.57	
			74164075198105000004	CREDIT RETURNED LAMINATING FILM	2001516015	-99.99	
10 E 200 411 222200 000				GENERAL FUND/LMC - INST SERVICE/GENERAL SUPPLIES		-99.99	
			74164075198105000005	CREDIT RETURNED, LAMINATING FILM	2001516024	-99.99	
10 E 400 411 222200 000				GENERAL FUND/LMC - INST SERVICE/GENERAL SUPPLIES		-99.99	
69627 SKYWARD ACCOUNTING DEPT		08/05/2015	173701	WEBEX TRAINING	1011516010	1,715.00	1,715.00
10 E 800 310 252000 000				GENERAL FUND/FISCAL/PERSONAL SERVICES		1,715.00	
69628 STRATFORD SIGN COMPANY		08/05/2015	39653	CRANE SERVICE to replace exterior lights	0	330.00	330.00
10 E 800 320 254200 000				GENERAL FUND/MAINTENANCE-SITES/PROPERTY SERVICE		330.00	
			6	Computer	Check(s) For a Total of		4,034.22

Check Nbr	Vendor Name	Check Date	Invoice Number	Invoice Desc	PO Number	Invoice Amount	Check Amount
69629	ADVANCED DISPOSAL	08/17/2015	M10000803363	JULY GARBAGE PICK UP	0	699.67	699.67
10 E 800 320 253300 000				GENERAL FUND/OPERATION OF BUILDINGS/PROPERTY SERVICE		699.67	
69630	A J CONTRACT SERVICES, INC.	08/17/2015	35269	HS POOL PUMP, DIVERTER, ORINGS	0	987.50	987.50
10 E 800 320 254300 000				GENERAL FUND/MAINTENANCE-BUILDINGS/PROPERTY SERVICE		237.50	
10 E 800 411 254300 000				GENERAL FUND/MAINTENANCE-BUILDINGS/GENERAL SUPPLIES		180.00	
10 E 800 440 254300 000				GENERAL FUND/MAINTENANCE-BUILDINGS/NON-CAPITAL EQUIPMEN		570.00	
69631	BATTERIES PLUS+	08/17/2015	072-114863	HS PARKING LOT BULBS	0	49.00	49.00
10 E 800 411 253200 000				GENERAL FUND/OPERATION-SITES/GENERAL SUPPLIES		49.00	
69632	BILL'S TIRE & SERVICE, INC.	08/17/2015	41688	FIX/MOUNT TIRE	0	53.43	411.05
10 E 800 320 254490 000				GENERAL FUND/REPAIR OTHER EQUIP/PROPERTY SERVICE		53.43	
			41724	2 TIRES	0	357.62	
10 E 800 411 254500 000				GENERAL FUND/MAINTENANCE-VEHICLES/GENERAL SUPPLIES		357.62	
69633	BURNETT TRANSIT, INC.	08/17/2015	5276	REGULAR BUS ROUTES - (1ST OF (9) MONTHLY INVOICES - SEPTEMBER 2015	0	65,582.20	65,582.20
10 E 800 341 256710 000				GENERAL FUND/FLEET PUPIL TRANSPORTATION/PUPIL TRAVEL		65,582.20	
69634	CHARTER COMMUNICATIONS	08/17/2015	8/11/15-9/10/15	ACCOUNT #8245 11 261 0013287	0	36.76	73.52
10 E 800 358 266000 000				GENERAL FUND/TECHNOLOGY COORD/PROJECTS/ON-LINE COMMUNIC		36.76	
			8/15/15-9/14/15	ACCOUNT #8245 11 261 0013311	0	36.76	
10 E 800 358 266000 000				GENERAL FUND/TECHNOLOGY COORD/PROJECTS/ON-LINE COMMUNIC		36.76	
69635	CITY OF COLBY	08/17/2015	ADAMS ST HOUSE	6/16/15-7/15/15	0	18.00	1,578.15
10 E 800 337 253300 000				GENERAL FUND/OPERATION OF BUILDINGS/WATER SERVICE		18.00	
				CONCESSION STAND 6/16/15-7/15/15	0	57.00	
10 E 800 337 253300 000				GENERAL FUND/OPERATION OF BUILDINGS/WATER SERVICE		57.00	
				DISTRICT ED CENTER 6/16/15-7/15/15	0	47.10	
10 E 800 337 253300 000				GENERAL FUND/OPERATION OF BUILDINGS/WATER SERVICE		47.10	
				ELEMENTARY SCHOOL 6/16/15-7/15/15	0	191.70	
10 E 800 337 253300 000				GENERAL FUND/OPERATION OF BUILDINGS/WATER SERVICE		191.70	
				HIGH SCHOOL 6/16/15-7/15/15	0	1,137.05	
10 E 800 337 253300 000				GENERAL FUND/OPERATION OF BUILDINGS/WATER SERVICE		1,137.05	

Check Nbr	Vendor Name	Check Date	Invoice Number	Invoice Desc	PO Number	Invoice Amount	Check Amount
			MIDDLE SCHOOL	6/15/15-7/15/15	0	127.30	
10 E 800 337 253300 000			GENERAL FUND/OPERATION OF BUILDINGS/WATER SERVICE			127.30	
69636	CYNMAR LLC	08/17/2015	400089	DISPOSABLE GLOVES, BEAKERS, BRUSH, PETRI DISHES, SAFETY GLASSES, TUBING	5001516011	249.12	249.12
10 E 400 411 126000 000			GENERAL FUND/SCIENCE/GENERAL SUPPLIES			249.12	
69637	DALCO	08/17/2015	2904371	CLEANING PADS	0	31.79	31.79
10 E 800 411 253300 000			GENERAL FUND/OPERATION OF BUILDINGS/GENERAL SUPPLIES			31.79	
69638	DECKER AUTOMOTIVE LLC	08/17/2015	22524	VAN OIL CHANGE	0	58.44	138.01
10 E 800 320 254500 000			GENERAL FUND/MAINTENANCE-VEHICLES/PROPERTY SERVICE			58.44	
			22557	VAN OIL CHANGE & THROTTLE CONTROL REPAIRED	0	79.57	
10 E 800 320 254500 000			GENERAL FUND/MAINTENANCE-VEHICLES/PROPERTY SERVICE			79.57	
69639	FLAGHOUSE	08/17/2015	P06651360101	INDOOR/OUTDOOR ACCESSIBLE SWING SEAT	6001516036	289.94	289.94
27 E 100 440 158100 341			SPECIAL EDUC./MULTICATEGORICAL HANDICAPPED/NON-CAPITAL			289.94	
69640	GARY GEIGER	08/17/2015	DISCUS	LABOR & RODS	0	150.00	150.00
10 E 800 320 254200 000			GENERAL FUND/MAINTENANCE-SITES/PROPERTY SERVICE			100.00	
10 E 800 411 254200 000			GENERAL FUND/MAINTENANCE-SITES/GENERAL SUPPLIES			50.00	
69641	HEINEMANN	08/17/2015	6492412	GR 1 GREEN LEVEL TAKE HOME BOOKS	3001516007	200.20	200.20
10 E 100 411 122000 141			GENERAL FUND/ENGLISH/GENERAL SUPPLIES			200.20	
69642	JAMES PETERSON SONS INC	08/17/2015	26611MB	(DISCUS) CONCRETE	0	306.00	306.00
10 E 800 411 254200 000			GENERAL FUND/MAINTENANCE-SITES/GENERAL SUPPLIES			306.00	
69643	J H LARSON COMPANY	08/17/2015	S100967770.001	BALLASTS	0	149.60	304.49
10 E 800 411 254300 000			GENERAL FUND/MAINTENANCE-BUILDINGS/GENERAL SUPPLIES			149.60	
			S100976386.001	FOOTBALL FIELD LITES	0	93.80	
10 E 800 411 253200 000			GENERAL FUND/OPERATION-SITES/GENERAL SUPPLIES			93.80	
			S100977246.001	ELECTRICAL TAPE	0	50.85	
10 E 800 411 254300 000			GENERAL FUND/MAINTENANCE-BUILDINGS/GENERAL SUPPLIES			50.85	
			S100977246.002	BULBS	0	10.24	
10 E 800 411 253300 000			GENERAL FUND/OPERATION OF BUILDINGS/GENERAL SUPPLIES			10.24	

Check Nbr	Vendor Name	Check Date	Invoice Number	Invoice Desc	PO Number	Invoice Amount	Check Amount
69644	KURT KALEPP EXCAVATING LLC	08/17/2015	4626	DISCUS AREA	0	1,975.50	1,975.50
	10 E 800 320 254200 000			GENERAL FUND/MAINTENANCE-SITES/PROPERTY SERVICE		1,537.50	
	10 E 800 411 254200 000			GENERAL FUND/MAINTENANCE-SITES/GENERAL SUPPLIES		438.00	
69645	KAYHART, BETTY A	08/17/2015	REIMBURSEMENT	WORKER	0	488.16	488.16
	50 E 800 293 257220 000			COMPENSATION			
				FOOD SERVICE FUND/FOOD SERVICE-LUNCH PROGRAM/MISCELLANE		488.16	
69646	LAMBEAU TELECOM	08/17/2015	21863234	NEILLSVILLE	0	69.24	69.24
	10 E 900 355 263300 000			GENERAL FUND/PUBLIC INFORMATION/TELEPHONE		69.24	
69647	LIGHTING DESIGN SOLUTIONS	08/17/2015	10663	MS GYM LITE	0	115.00	115.00
	10 E 800 411 253200 000			SENSORS			
				GENERAL FUND/OPERATION-SITES/GENERAL SUPPLIES		115.00	
69648	MARSHFIELD SENIOR HIGH SCHOOL	08/17/2015	ENTRY FEE	CROSS COUNTRY	0	115.00	115.00
	10 E 400 940 162308 000			INVITATIONAL AT WILDWOOD PARK 9-8-15			
				GENERAL FUND/BOYS/GIRLS XC/DUES & FEES		115.00	
69649	GANNETT WISCONSIN MEDIA	08/17/2015	9122555	HELP WANTED AD:	0	880.20	880.20
	10 E 800 354 263300 000			IT COORDINATOR			
				GENERAL FUND/PUBLIC INFORMATION/PRINTING & BINDING		880.20	
69650	MEYER LUMBER SUPPLY, INC.	08/17/2015	01955 1	RESPIRATOR,	0	20.53	130.44
	10 E 800 411 254300 000			RIVETS			
				GENERAL FUND/MAINTENANCE-BUILDINGS/GENERAL SUPPLIES		20.53	
	10 E 800 411 254200 000		02822 1	GOAL POST PAINT	0	26.94	
				GENERAL FUND/MAINTENANCE-SITES/GENERAL SUPPLIES		26.94	
	10 E 800 411 254300 000		02923 1	VALVES, NIPPLE	0	34.46	
				GENERAL FUND/MAINTENANCE-BUILDINGS/GENERAL SUPPLIES		34.46	
	10 E 800 411 254300 000		03387 1	CEMENT BOARD,	0	48.51	
				WOOD SCREWS, ADHESIVE, SPACERS			
				GENERAL FUND/MAINTENANCE-BUILDINGS/GENERAL SUPPLIES		48.51	
69651	MISSISSIPPI WELDERS SUPPLY CO	08/17/2015	I2023068	2015-16 HS TECH	5021516041	1,301.01	1,301.01
	10 E 400 411 136000 000			ED: WELDING SUPPLIES			
				GENERAL FUND/TECH ED/GENERAL SUPPLIES		1,301.01	
69652	NASSCO INC	08/17/2015	S1919938.001	BATH TISSUE,	0	1,305.60	1,305.60
	10 E 800 411 253300 000			TOWELING			
				GENERAL FUND/OPERATION OF BUILDINGS/GENERAL SUPPLIES		1,305.60	
69653	PER MAR SECURITY SERVICES CORP	08/17/2015	1387865	SECURITY	0	55.07	55.07

Check Nbr	Vendor Name	Check Date	Invoice Number	Invoice Desc	PO Number	Invoice Amount	Check Amount
				MONITORING/SERVICE S 9/1/15-9/30/15			
10 E 900 320 253300 000				GENERAL FUND/OPERATION OF BUILDINGS/PROPERTY SERVICE		55.07	
69654 P J JACOBS JUNIOR HIGH		08/17/2015	ENTRY FEE	SWIMMING & DIVING INVITATIONAL AT SPASH FIELDHOUSE 9-11-15 (6TH, 7TH, 8TH)	0	100.00	100.00
10 E 200 940 162124 000				GENERAL FUND/GIRLS SWIMMING/DUES & FEES		100.00	
69655 PRO-ED		08/17/2015	2324072	BASIC CONCEPT PICTURES CARDS	6001516017	98.95	274.79
27 E 800 411 156600 341				SPECIAL EDUC./SPEECH/LANGUAGE/GENERAL SUPPLIES		98.95	
			2324075	GRAMMAR GAMES BOOK, ARTICULATION CD ROM, VOCABULARY CD ROM	6001516014	175.84	
27 E 800 411 156600 341				SPECIAL EDUC./SPEECH/LANGUAGE/GENERAL SUPPLIES		43.95	
27 E 800 435 156600 341				SPECIAL EDUC./SPEECH/LANGUAGE/PROGRAMMED COMPUTER SOFTW		131.89	
69656 QUILL CORPORATION		08/17/2015	6420134	ENVELOPES	0	99.94	116.93
10 E 800 411 232100 000				GENERAL FUND/OFFICE OF SUPERINTENDENT/GENERAL SUPPLIES		99.94	
			6456745	ORANGE FILE FOLDERS	0	16.99	
10 E 100 411 241000 000				GENERAL FUND/OFFICE OF PRINCIPAL/GENERAL SUPPLIES		16.99	
69657 SCHOOL SPECIALTY		08/17/2015	208114708162	GLAZES	5021516006	14.07	774.80
10 E 200 411 121000 000				GENERAL FUND/ART/GENERAL SUPPLIES		14.07	
			208114773540	CLAY	5021516028	760.73	
10 E 400 411 121000 000				GENERAL FUND/ART/GENERAL SUPPLIES		760.73	
69658 SCHOOL DISTRICT OF ABBOTSFORD		08/17/2015	ENTRY FEE	VOLLEYBALL TOURNAMENT (C-TEAM) 10-3-15	0	75.00	75.00
10 E 400 940 162121 000				GENERAL FUND/GIRLS VOLLEYBALL/DUES & FEES		75.00	
69659 SCHOOL DISTRICT OF ABBOTSFORD		08/17/2015	ENTRY FEE.	VOLLEYBALL TOURNAMENT (VARSITY) 9-26-15	0	100.00	100.00
10 E 400 940 162121 000				GENERAL FUND/GIRLS VOLLEYBALL/DUES & FEES		100.00	
69660 SCHOOL DISTRICT OF ATHENS		08/17/2015	ENTRY FEE	CROSS COUNTRY MEET 10-01-15	0	110.00	110.00
10 E 200 940 162308 000				GENERAL FUND/BOYS/GIRLS XC/DUES & FEES		110.00	

Check Nbr	Vendor Name	Check Date	Invoice Number	Invoice Desc	PO Number	Invoice Amount	Check Amount
69661	SCHOOL DISTRICT OF AUBURNDALE	08/17/2015	ENTRY FEE	VOLLEYBALL TOURNAMENT 9-26-15	0	75.00	75.00
10 E 400 940 162121 000			GENERAL FUND/GIRLS VOLLEYBALL/DUES & FEES			75.00	
69662	SCHOOL DISTRICT OF BLACK RIVER	08/17/2015	ENTRY FEE	CROSS COUNTRY INVITATIONAL AT SKYLINE GOLF COURSE 10-06-15	0	100.00	100.00
10 E 400 940 162308 000			GENERAL FUND/BOYS/GIRLS XC/DUES & FEES			100.00	
69663	SCHOOL DISTRICT OF CADOTT	08/17/2015	ENTRY FEE	VOLLEYBALL INVITATIONAL 9-12-15	0	150.00	150.00
10 E 400 940 162121 000			GENERAL FUND/GIRLS VOLLEYBALL/DUES & FEES			150.00	
69664	SCHOOL DISTRICT OF LOYAL	08/17/2015	ENTRY FEE	VOLLEYBALL INVITATIONAL 10-10-15	0	110.00	110.00
10 E 400 940 162121 000			GENERAL FUND/GIRLS VOLLEYBALL/DUES & FEES			110.00	
69665	SCHOOL DISTRICT OF MOSINEE	08/17/2015	ENTRY FEE	CROSS COUNTRY INVITATIONAL AT 9 MILE COUNTY PARK	0	75.00	75.00
10 E 400 940 162308 000			GENERAL FUND/BOYS/GIRLS XC/DUES & FEES			75.00	
69666	SCHOOL DISTRICT OF NEILLSVILLE	08/17/2015	ENTRY FEE	CROSS COUNTRY SCRIMMAGE AT LEVIS MOUND 8-25-15 (HS ONLY)	0	50.00	50.00
10 E 400 940 162308 000			GENERAL FUND/BOYS/GIRLS XC/DUES & FEES			50.00	
69667	SCHOOL DISTRICT OF NEILLSVILLE	08/17/2015	ENTRY FEE.	CROSS COUNTRY INVITATIONAL AT LEVIS MOUND 9-15-15 (HS ONLY)	0	75.00	75.00
10 E 400 940 162308 000			GENERAL FUND/BOYS/GIRLS XC/DUES & FEES			75.00	
69668	SCHOOL DISTRICT OF RIB LAKE	08/17/2015	ENTRY FEE	VOLLEYBALL TOURNAMENT (JV) 9-5-15	0	110.00	110.00
10 E 400 940 162121 000			GENERAL FUND/GIRLS VOLLEYBALL/DUES & FEES			110.00	
69669	SCHOOL DISTRICT OF STRATFORD	08/17/2015	ENTRY FEE	VOLLEYBALL TOURNAMENT 9-19-15	0	90.00	90.00
10 E 400 940 162121 000			GENERAL FUND/GIRLS VOLLEYBALL/DUES & FEES			90.00	
69670	SCHOOL DISTRICT OF THORP	08/17/2015	ENTRY FEE	VOLLEYBALL	0	75.00	75.00

Check Nbr	Vendor Name	Check Date	Invoice Number	Invoice Desc	PO Number	Invoice Amount	Check Amount
				TOURNAMENT (JV) 10-10-15			
10 E 400 940 162121 000				GENERAL FUND/GIRLS VOLLEYBALL/DUES & FEES		75.00	
69671	SCHOOL DISTRICT OF THORP	08/17/2015	ENTRY FEE.	VOLLEYBALL TOURNAMENT (C-TEAM) 10-10-15	0	75.00	75.00
10 E 400 940 162121 000				GENERAL FUND/GIRLS VOLLEYBALL/DUES & FEES		75.00	
69672	SD OF WISCONSIN RAPIDS	08/17/2015	ENTRY FEE	WISCONSIN RAPIDS LINCOLN HIGH SCHOOL- VOLLEYBALL GIRLS INVITE 8-29-15	0	140.00	140.00
10 E 400 940 162121 000				GENERAL FUND/GIRLS VOLLEYBALL/DUES & FEES		140.00	
69673	SOCIAL STUDIES SCHOOL SERVICE	08/17/2015	SI56635	ACTIVITY BOOKS, REPRODUCIBLES, DVD'S	5001516017	55.90	55.90
10 E 400 431 127000 000				GENERAL FUND/SOCIAL STUDIES/AUDIO-VISUAL MEDIA		55.90	
69674	SOLUTION TREE LLC	08/17/2015	843517	DVD, RESOURCE BOOKS	6011516016	264.90	264.90
10 E 800 439 221300 000				GENERAL FUND/INST. STAFF SERV. - TRAINING/OTHER MEDIA		264.90	
69675	T & C WATER SYSTEMS	08/17/2015	28343		0	13.20	13.20
10 E 800 411 232100 000				GENERAL FUND/OFFICE OF SUPERINTENDENT/GENERAL SUPPLIES		13.20	
69676	TEAM SPORTING GOODS INC	08/17/2015	AAH063006	2015-2016 HS VOLLEYBALL: BALL CART BAGS, VOLLEYBALLS, SCOREBOOKS, JERSEYS	5021516016	229.00	1,681.16
10 E 400 420 162121 000				GENERAL FUND/GIRLS VOLLEYBALL/APPAREL		229.00	
			AAH063007	2015-2016 HS VOLLEYBALL: BALL CART BAGS, VOLLEYBALLS, SCOREBOOKS, JERSEYS	5021516016	1,140.00	
10 E 400 420 162121 000				GENERAL FUND/GIRLS VOLLEYBALL/APPAREL		1,140.00	
			AAH063101	2015-2016 MS FOOTBALL: FOOTBALLS, FIELD PAINT, GATORADE, MOUTH GUARDS, HELMET NUMBERS	6011516003	216.16	

Check Nbr	Vendor Name	Check Date	Invoice Number	Invoice Desc	PO Number	Invoice Amount	Check Amount
10 E 200 411 162210 000				GENERAL FUND/FOOTBALL/GENERAL SUPPLIES		216.16	
			AAH063437	M-LASTIC TAPE	0	96.00	
10 E 800 411 162001 000				GENERAL FUND/ATHLETICS-GENERAL/GENERAL SUPPLIES		96.00	
69677	TUMARX PRINTING INC.	08/17/2015	26733	BACK TO SCHOOL NEWSLETTERS, SCHOOL CALENDARS	0	2,294.52	2,294.52
10 E 800 354 263300 000				GENERAL FUND/PUBLIC INFORMATION/PRINTING & BINDING		2,294.52	
69678	UNIVERSITY OF MINNESOTA	08/17/2015	ENTRY FEE	2015 ROY GRIAK CROSS COUNTRY INVITATIONAL 9-26-15	0	300.00	300.00
10 E 400 940 162308 000				GENERAL FUND/BOYS/GIRLS XC/DUES & FEES		300.00	
69679	WAUSAU EAST HIGH SCHOOL	08/17/2015	ENTRY FEE	CROSS COUNTRY INVITATIONAL AT TRIBUTE GOLF COURSE 9-19-15	0	200.00	200.00
10 E 400 940 162308 000				GENERAL FUND/BOYS/GIRLS XC/DUES & FEES		200.00	
69680	WI DEPT OF JUSTICE	08/17/2015	ACCT #G2930	(1) BACKGROUND SEARCH	0	7.00	7.00
10 E 800 310 232100 000				GENERAL FUND/OFFICE OF SUPERINTENDENT/PERSONAL SERVICES		7.00	
69681	WISCONSIN MATHEMATICS LEAGUE	08/17/2015	26997-24	2015-16 MATH LEAGUE: HIGH SCHOOL MATH CONTEST	5021516055	90.00	90.00
10 E 800 940 161320 000				GENERAL FUND/MATHEMATICS LEAGUE/DUES & FEES		90.00	
69682	XCEL ENERGY	08/17/2015	ADAMS ST HOUSE	7/8/15-8/6/15	0	24.29	242.59
10 E 800 336 253300 000				GENERAL FUND/OPERATION OF BUILDINGS/ELECTRICITY OTHER T		24.29	
				DISTRICT ED CENTER	0	218.30	
10 E 800 336 253300 000				GENERAL FUND/OPERATION OF BUILDINGS/ELECTRICITY OTHER T		218.30	
54 Computer Check(s) For a Total of						85,311.65	



MORNING GLORY DAIRY

SCHOOL MILK BID FOR 2015-2016

DATE: July 29, 2015

SCHOOL OR SCHOOL SYSTEM

School District of Colby
Attn: Ms. Audra Brooks
P.O Box 139
Colby, WI 54421

LOCAL DISTRIBUTOR:

Bushmann Dairy
715-387-1117
Graykowski Distributing
715-849-3936

	1/2 PINT VITAMIN D	0.2400	1/2 PINT STRAWBERRY
	1/2 PINT 2% REDUCED FAT	3.5552	Gallon 1%
0.2310	1/2 PINT 1% LOW FAT	9.3065	5lb Cottage Cheese
0.2210	1/2 PINT SKIM FAT FREE	6.9980	5lb Sour Cream
0.2370	1/2 PINT TRUMOO CHOC. FAT FREE <i>Sucrose, Reduced Sugar 18 gr.</i>		

ESCALATION CLAUSE

The prices for dairy products specified in this bid are based upon the current raw milk cost of \$ 21.85 per hundred weight CLASS I, which is the CMPC announcement for the month of August, 2015. According to CMPC for each +/- \$.10/cwt change in the announced Class I skim milk price, the per unit prices for 1/2 pints will change as follows: Vitamin D .00052, reduced fat 2% .00053, low fat 1% .00053, and fat free skim .00054.

According to CMPC Class I butterfat cost, for each +/- \$.10/lb. change in the announced butterfat price, the per unit prices for 1/2 pints will change as follows: Vitamin D .0018, reduced fat 2% .0011, low fat 1% .0005, and fat free skim .0001.

You will be notified 10 days prior to any necessitated change in price.

TERMS

Net, 30 days from receipt of invoice.

No credit for returns.

If you have any questions call 1-800-242-7346 then contact Paul Kernosky ext. 43534.

Thank you for the opportunity to submit this bid.

Paul Kernosky
Sales Coordinator
E-mail: Paul_Kernosky@deanfoods.com



Owner: Colby School District
 Document: RFP Response Review – Act 32 Project
 Date: August 12, 2015

Overview:

Colby School District posted a Request for Proposals (RFP) for qualified providers of Performance Contracting Services under the state’s Act 32 program. 1 response was received by the deadline from Market & Johnson. A review of the proposal response has been completed and the table below summarizes the information in a format that matches the RFP.

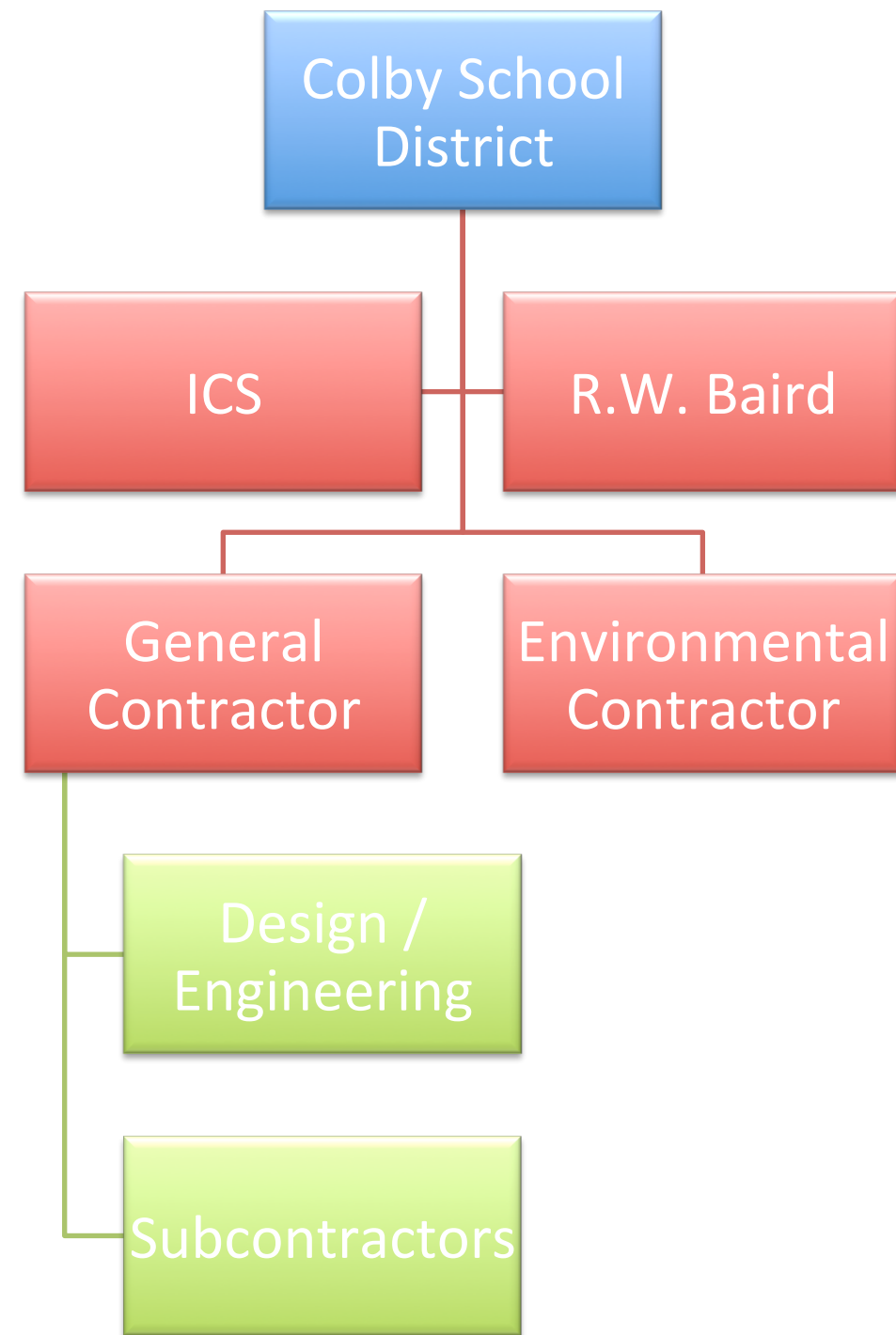
RFP Item #:

1. Qualifications & Experience		Market & Johnson
	a. Company Overview	Long Wisconsin history. Focus on building relationships. Noted as western Wisconsin largest General Contracting firm.
	b./c. Team Experience	Provided full resumes for Principal in charge and project manager. Both have requisite experience.
	d. Similar Projects	Listed approximately 60 public school WI districts as clients
2. Implementation Approach		
	a. App to Subs	Did not specifically list, referenced involvement in stage 4 of budgeting process on page 11
	b. Design Eng App	Discussion on preliminary vs. detailed design, in budgeting stages on page 11
	c. Proj Mgmt App	Page 13 discusses comprehensive approach, including standard weekly and monthly reporting
	d. Ongoing Service	Not addressed
	e. Training Service	Not addressed
3. Financial Considerations		
	a. Utility Rebates	Collaboratively work on maximizing, all provided to district
	b. Costs & Savings	Open book, GMP, all savings returned to district
	c. Fee Schedule	6-7% on top of cost of project (sub bids), may have gen conditions in addition
	d. Tax Exempt Purch	Use Market Materials to process all equipment \$5,000 or more.
	e. Pricing Approach	Change orders upon request, all competitively bid and approval by owner and ICS
4. References		
	a. References	Onalaska School District, Whitehall School District, Durand School District
5. Answers to questions		
	a. Been Sued?	No.
	b. Local Presence?	Since 1948, LaCrosse office 20 years
	c. Required Sub?	None - independent
	d. Warranty?	1 year standard; extended available
	e. Parent Company?	S-corp owned by 6 individuals. No parent company.
	f. Differentiator?	Experience and value engineering
	g. In-house services?	Equipment available, no statement on requirements for using their equipment
	h. In-house trades?	Masonry, concrete, carpentry
	i. Development fee?	Yes and will negotiate.

Project Structure

Who's who

- Owner retains control
- General Contractor contracts directly with district
- ICS serves as Owner's Representative / facilitator



BOARD MEMBER USE OF ELECTRONIC MAIL

Electronic mail (e-mail) and computer transmissions by members of the Board of Education under some circumstances may be considered a meeting under the Wisconsin Open Meeting Law. Therefore, subject to applicable Board policies, e-mail will be used by the Board only for the purpose of communicating the following matters:

1. Messages between Board members or between Board members and employees that do not involve interactive exchange of opinions constituting discussion, deliberation, or decision-making on subjects within the realm of the Board's authority;
2. Possible meeting agenda items between the Superintendent of Schools and the Board President;
3. A Board meeting agenda or public record information concerning items on the agenda;
4. Requests for public record information pertaining to District operations;
5. Questions posed by the public to administrators requesting a District response.
6. Posting of all Committee and Board Meetings.

Under no circumstances shall Board members use e-mail to interactively communicate among themselves regarding Board business on subjects within the Board's realm of authority or which could be considered an invasion of privacy if the messages were to be monitored by another party.

Board members shall be provided with an e-mail account on the District file server. These accounts will be managed and archived by the District which will act as the legal custodian of such records on behalf of Board members as allowed by law. Official e-mail communications to Board members will be sent to the member's account on the District file server. Replies to e-mail messages by Board members are expected to be made via the District e-mail system, which allows the District to archive the return message.

Electronic Access: Board members will be provided with a device capable of accessing District Information, District email and web posts in order to provide them with timely communication. Board member devices will be upgraded (rotated) on a schedule that aligns with election cycles. Individual Board members will be provided the option of purchasing the device rotated out of Board use or returning it to the District. Purchase prices shall be determined by the Superintendent and shall be equal to purchasing a similar device at a market price.

Furthermore, there is no expectation of privacy for any messages sent or received via the District e-mail system. Messages that have been deleted may still be accessible on the file server or other such device. Messages - deleted or otherwise - may be subject to disclosure under the Wisconsin Public Records Law unless an exemption would apply.

LEGAL REFERENCE: Wisconsin Stat. Chapters 19 and 120
CROSS REFERENCE: Exhibit (4) #363.1 – Acceptable Use Policy – Handbook Version
Policy #363.1 – Electronic Communication System Policy
Policy #823 – Public Records Policy

OPERATING PROCEDURES

MEETING POSTINGS

Meeting postings to include all District buildings visible from outside, and District banks designated by the School District of Colby. Any regular and special meeting agenda will be published in the designated paper and the District website.

REGULAR MEETINGS

The regular meeting of the Board of Education shall be held the third Monday of each month at 7:30 7:00 PM or by a majority decision of the entire Board.

SPECIAL MEETINGS

A special meeting of the Board will be held upon written request of any board member. Clerk (or President in Clerk's absence) will serve to the other members a written notice of the time and place of the meeting at least twenty-four (24) hours before the hour of the meeting. Such notice to each member shall be sent by email, messenger or by first class mail. No business will be transacted except that for which the meeting is called and which will be stated in the call.

PLACE OF MEETING

Meetings of the Board of Education shall be held in the Colby District Education Center (CDEC) unless a different place will be designated by resolution or in the notice of the meeting.

START OF MEETING

The President or chairperson shall start all meetings promptly at the appointed hour.

TRANSACTION OF BUSINESS

The Board of Education will transact all business at a legal meeting of the Board. No member shall have power to act in the name of the Board outside a Board meeting, without specific authorization by vote of the Board of Education.

RULE OF ORDER

Meeting will be conducted in accordance with the most current edition of Roberts Rule of Order, except as otherwise provided by board policy or state statute.

DISCUSSIONS

Discussions by any Board members shall be permitted on any subject on the agenda.

REMOTE PARTICIPATION

The community expectation of elected officials is regular, physical attendance at the monthly meetings of the Board of Education. It is also acknowledged that attendance may conflict with other commitments of Board members; thus, remote (teleconference, video conferencing, etc.) participation is permitted given the following conditions:

- Remote participation is limited to no more than twice during a calendar year, unless approved by a majority vote of the entire Board at a previous meeting.
- Attendance shall be recorded in minutes as "remote attendance" and shall not be included for establishing a quorum.

- Voting is permitted during remote participation.
- Closed session requires physical attendance and remote participation is not permitted.

LIMITATIONS ON DISCUSSIONS

The board may adopt rules to limit its own discussions on any item. The President will stop any discussion which does not apply to the motion last made and may also stop the discussion of a matter if the Board has previously agreed to confine discussion to a definite period of time, and that period has been used up. Aside from such limitations, the President shall not interfere with discussion as long as a member wishes to speak.

LEGAL REFERENCE: Wisconsin Stats. 19.83(2)

CROSS REFERENCE: Policy #161 – Board Member Authority/Responsibilities

Policy #170 – School Board Meetings

Policy #180-Rule – Order of Business

SELECTION OF HIGH SCHOOL STATE SPONSORED (HEAB) SCHOLARSHIP AND HONOR STUDENTS

The student having the highest GPA (grade point average) at the end of the seventh semester in high school will be selected to qualify as a scholarship recipient. The student must:

- a. Be enrolled as a full-time student through seven semesters.
- b. Attended Colby High School as a full-time student for four semesters (mid-point of sophomore year to mid-point of senior year).

In cases where there is a tie, based upon the highest cumulative G.P.A. at the end of the seventh semester, the following tiebreaker criteria will be used:

- a. The highest American College Test ACT composite score will determine who is selected the recipient. The ACT score must be on file in the guidance student services office by February 1st. The other student(s) tied with the highest G.P.A but not having the highest ACT composite score, will be designated runners up for consideration if for any reason the qualifier does not or cannot accept.
- b. If two or more students remain tied with the highest ACT composite score, additional tiebreakers may be applied. If still tied at ACT composite score declaring attendance at a Wisconsin College/University, then the number of AP classes; number of credits attempted; the composite PSAT scores; will be compared to break the tie will be applied. The additional tiebreakers shall be, in order:
 1. The student who has the greatest number of combined Advanced Placement (AP) and post-secondary level courses scheduled throughout the student's four years of high school. If the course(s) are scheduled during the eighth semester, the classes(s) may not be dropped (unless a withdraw/fail is applied) once the HEAB Award has been named.
 2. The student who has the highest G.P.A. in Advanced Placement (AP) and post-secondary level courses.
 3. The student who has the greatest number of dual credit technical college level courses scheduled throughout the student's four years of high school. If the course(s) are scheduled during the eighth semester, the classes(s) may not be dropped (unless a withdraw/fail is applied) once the HEAB Award has been named.
 4. The student who has the greatest number of credits earned following the seventh semester.
 5. In the event that a tie still exists after steps 1, 2, 3 and 4, a draw from a new deck of cards shall be used to determine the winner. The highest draw, with 2 being the lowest and ace being the highest shall be declared the winner. Consecutive draws may be conducted until a winner is declared. The student whose last name is first alphabetically, will draw first. The Superintendent shall supervise the draw of the cards. Parents/Guardians of the students tied for the "Academic Excellence in High Education" will be invited to attend the card draw.

HONOR STUDENTS

Colby High School will designate graduates with 3.6667 cumulative GPA as honor students.

G.P.A.

A G.P.A. is determined for full-time students by using their accumulated points from grades received (A=4, B=3, C=2, D=1, F=0), and dividing the total points by the number of credits taken. Rank in the class then evolves as students graduation class is compared to one another in a descending rank. GPA is used only to designate honor students for graduation and the HEAB scholarship recipient. Visiting students who are part of foreign exchange program, although they may meet the GPA, are not included in class rank.

GRADUATION CEREMONY PARTICIPATION

Graduating seniors must have satisfactorily completed all obligations (fines, fees, assessments, assignments, tests, detentions, etc.) to be eligible to participate in the Commencement ceremony.

Students' participation in graduation exercises is optional. All graduating seniors are encouraged to participate in the commencement ceremony because it marks an important accomplishment in their lives. Since participation is optional, student that do participate are expected to conduct themselves in an orderly manner. The CHS administration will prepare and distribute regulations pertaining to commencement participation consistent with this policy.

To maintain the dignity and decorum of the graduation ceremony, only those students appropriately dressed for the occasion shall be permitted to participate. Students participating the graduation exercises must wear the cap and gown selected for the year. Students are required to pay a fee for the cap and gown. Since Commencement is a school-sponsored activity, all school rules of behavior apply. Anyone misbehaving during the exercises will be asked to leave.

LEGAL REFERENCE: Wisconsin Stats. 39.41
Wisconsin Administrative Code - PI 9.03(1), HEA 9

EMPLOYEE TOBACCO USE ON SCHOOL PREMISES

~~As new evidence accumulates proving serious hazards to the health of users of tobacco products and to the health of those subjected to tobacco smoke, it has become necessary to reconsider the role which the schools should play concerning tobacco usage.~~

It is the policy of this school district that no official or staff member shall take any action which might encourage a student to smoke or otherwise use tobacco products, **tobacco-related devices or electronic cigarettes at any time**. Students look to adults as role models and justify their actions by the examples of others, especially adults in positions of authority. If a school is not to encourage smoking, it must not condone it, either for students or adults, in the school environment. Therefore,

- A. There shall be no smoking or other use of tobacco products **or electronic cigarettes** in any of the school buildings, offices, shops, warehouses, vehicles or enclosed structures of the Colby District
- B. There shall be no smoking or other use of tobacco products **or electronic cigarettes** on any school grounds, playing field, or other outdoor area of the Colby School District.
- C. **Exceptions may be granted, in advance, by the Superintendent for medically prescribed nicotine cessation products.**
- D. Employees who repeatedly violate tobacco-free policies will be subject to discipline.

LEGAL REFERENCE: Wisconsin Stats. 101.123, 120.12(20)

MILEAGE REIMBURSEMENTS

MILEAGE-DISTRICT BUSINESS

The mileage turned in shall be listed by the daily trip and not cumulative totals. All trips for which the district reimburses staff must be authorized by the individual's immediate supervisor.

The Colby School District will pay the federal mileage rate per mile to those personnel furnishing their own vehicles and required by assignment to travel between schools commencing at the first school assigned each day, to the other school or schools or stations assigned and ending at the last station assigned.

CROSS REFERENCE: ~~Exhibit #671.2—Mileage Reimbursement Chart~~

TOBACCO USE ON SCHOOL PREMISES

It is the policy of this school district that no official or staff member shall take any action which might encourage a student to smoke or otherwise use tobacco products, tobacco-related devices or electronic cigarettes at any time. Students look to adults as role models and justify their actions by the examples of others especially adults in positions of authority. The district does not encourage smoking and does not condone students or adults using tobacco in the school environment.

Therefore,

- A. There shall be no smoking or other use of tobacco products, tobacco-related devices or electronic cigarettes on any of the school premises at any time.
- B. This no-use policy is in effect at all school-related functions.

LEGAL REFERENCE: Wisconsin Stats. 101.123, 120.12(20)

APPROVED: 05/18/87

REVISED: 10/15/90

REVISED: 02/10/03

STUDENT DIRECTORY DATA

The Colby School District has designated;

- student name
- age
- grade level
- participation in officially recognized school programs and sports
- weights and heights for members of athletic teams
- student's photographs
- degrees and awards received

as Directory Information and *may* release this information to the public without prior consent.

The District will publish a directory data notice annually in the district newsletter before the start of school. Parent, guardians, guardian ad litem and adult students have fourteen (14 days) to inform the school (in writing) that they do not want their directory data information released. All new enrollees, as well as parents, guardians, guardian ad litem and adult students will be notified of directory data information upon enrollment by each building office through the registration process. For transfer students, they will have fourteen (14 days) to inform the school (in writing) that they do not want their directory data information released.

The withheld directory data / information will not be released without prior written consent of the parent or adult student.

Authorization to withhold directory data will remain in effect until the start of the following school year, or until the parent or adult student notifies the district in writing of their intent to release this data.

Directory data / information relating to students no longer attending the district will not be released if the parent, guardians, guardian ad litem or eligible adult student has indicated that such information shall not be released in the year preceding the year in which the student has left the district.

Requests for directory data should be submitted in writing to the building principal. Principals may produce the requested student directory data information and may charge a fee for same in accordance with the district's fee schedule for the reproduction of documents and/or records.